



# **Arctic**

## **TRAILERS INC.**

---

### **Gravel / Material Handling Parts Catalogue**

**3323 Hart Highway Prince George, BC V2K 1M8**

**Phone: (250) 962-9631**

**Fax - Parts (250) 962-2588**

**Fax - Office (250) 962-7500**

**Web: [www.arcticmfg.com](http://www.arcticmfg.com)**

**Contact: [arctic.mfg@arcticmfg.com](mailto:arctic.mfg@arcticmfg.com)**

November 26, 2024



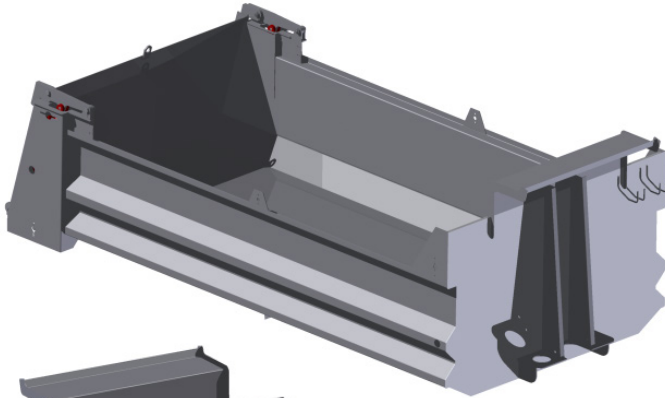


# Index

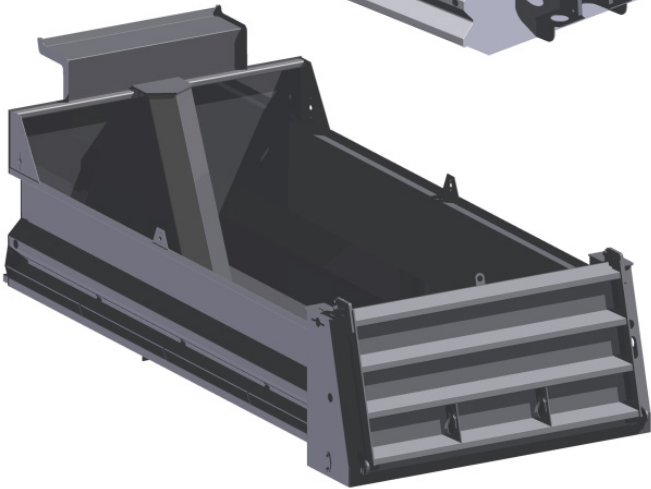
- A**  
A-Frame: 25t Ram 18  
A-Frame: 40t Ram 18  
Apron 20
- B**  
Batch Tail-Gate 21  
Body Block 15  
Body Bracket: A-Frame Lift 18  
Bulkhead Fitting 35
- C**  
Cab Controls / Switches 14  
Controls 34  
Coupler Service Gauge 48  
Custom Made Hydraulic Hose 33  
Cylinders - Main Lift 27  
Cylinders - Secondary 19
- D**  
Discharge Unit 8  
Dolly Jack 45  
Drawbar 36  
Dump Boxes 3  
Dump-Box Tarps 32
- E**  
Electrical 49
- F**  
Filters 34
- G**  
Grommet, 4" 48  
Grommet, Rect 51
- H**  
High-Lift Arm: Hydraulic Lift 20  
Hinge Assembly 43  
Hinge Pin 25  
Hinge Pin: 35t - 2" Pin 25  
Hinge Pin: 45t - 2 1/2" Pin 25  
Hitch 36  
Hitch - Adjustable Air 39
- Hydraulics 33
- J**  
Junction Box 54
- L**  
Lamp, Amber-Rect - LED Stop/Turn/  
Tail 51  
Lamp, Amber-Rect, Stop/Turn/Tail  
51  
Lamp, Clear, 4", Back-Up 51  
Lamp, Rect, Clear, Back-Up 51  
Lamp, Red, 4", Stop/Turn/Tail 51  
Lamp, Red - LED, 4", Stop/Turn/Tail  
51  
Lamp, Red-Rect, 4", Stop/Turn/Tail  
51  
Lamp, Red-Rect - LED, 4", Stop/  
Turn/Tail 51  
Lamp, Red-Reflector, 4", Stop/Turn/  
Tail 51  
LED Lighting 50  
Lighting  
Incandescent  
LED 50  
Lower Hinge Lug 26
- M**  
Muncie Power 34
- N**  
Nahanni Lower Lug 26  
Nahanni Upper Lug 26
- P**  
Pigtail 54  
Pin-Pin Ram 28  
Pioneer-Coverall - Tarps 30  
Pioneer F/Male Coupler 35  
Pioneer Male Coupler 35  
PTO's 34  
Pumps 34  
Push-Pull Cable 55  
Push-Pull Trip Control 14
- R**  
Ram, Air: 3 1/4" b x 8" s 20  
Ram Bases - Main Lift 16  
Ram, Hydraulic: 3" b x 8" s 20  
Ram, Hydraulic: 4" b x 14" s 20
- Relay Valve 11  
Ridewell Suspension 54  
Rotating Beacon 49
- S**  
Sanders 8  
Sanders / Discharge Unit 8  
V-Sander Parts Break-down 11  
Spool Mount Plate 24  
Stobe Beacon 52  
Suspension 56  
Swivel Drawbar Eye 37
- T**  
Tail-Gate 22  
Tail-Gates 21  
Tank Kits 34  
Tarp, Asphalt 32  
Tarp, Mesh 31  
Tarps 29  
Tipping Sill 23  
Trunnion-Trunnion Ram 28
- U**  
Upper Hinge Lug 25
- W**  
Wet - Kit 33  
Work Lamp Incandescent 12v: Rub-  
ber 53  
Work Lamp LED 12v: Alum Housing  
53  
Work Lamp LED 12v: Rubber Hous-  
ing 53



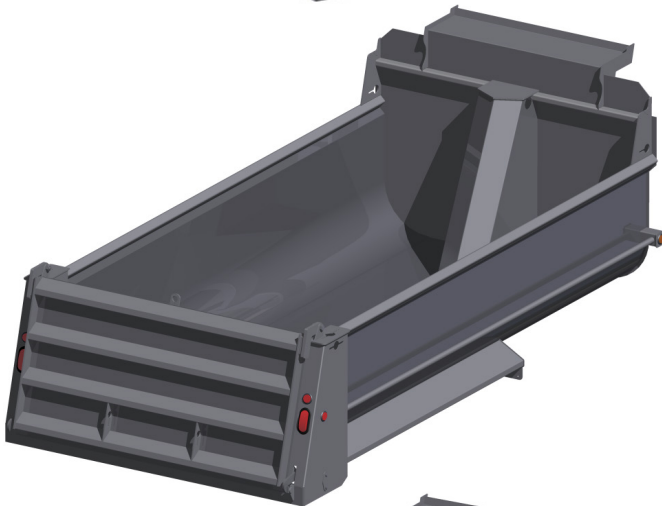
# Dump Boxes



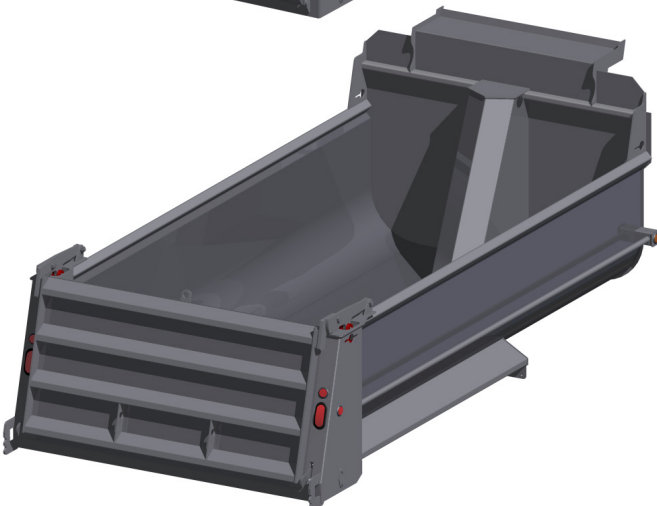
Part Number	Description
AML5001B	16'-6" Smooth Std Side, Outside Mnt Ram, 1998 - 2004



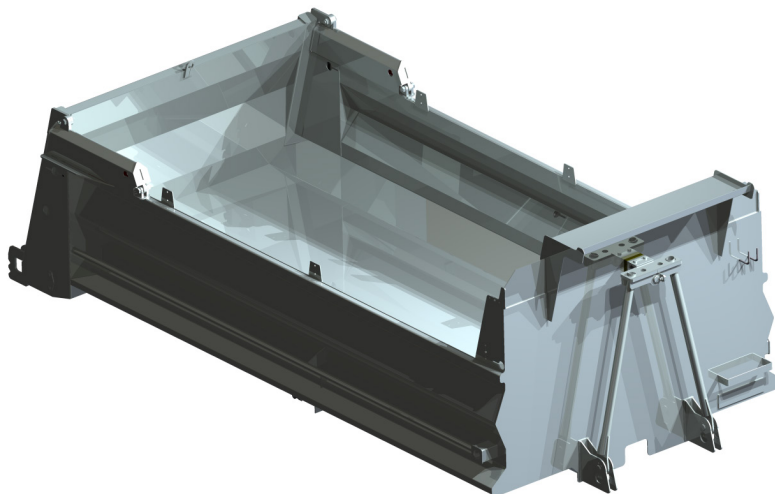
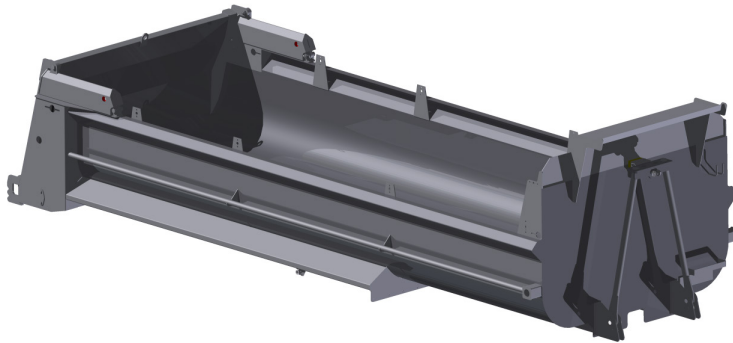
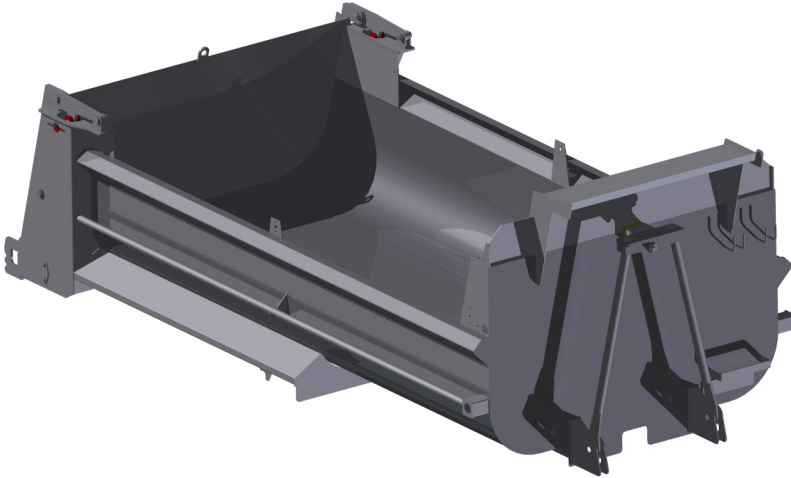
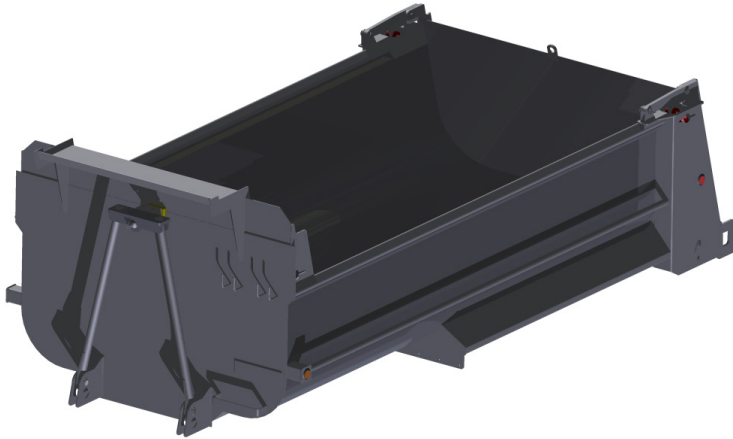
Part Number	Description
AML5001C	16'-6" Smooth Std Side, Inside Mnt Ram, 2001 - 2006



Part Number	Description
AML5001C	16'-6" Tub Std Side, Inside Mnt Ram, 2006 - 2008
AML5001C-HL	16'-6" TubStd Side, Inside Mnt Ram, Air Hi-Lift, 2006 - 2008



Part Number	Description
AML5001D	16'-6" Tub Std Side, Inside Mnt Ram, 2006 - 2008
AML5001D-HL	16'-6" TubStd Side, Inside Mnt Ram, Air Hi-Lift, 2006 - 2008



Part Number	Description
AML5001E	16'-6" Tub Std Side, Outside Mnt Ram, Hi-Sides
AML5001E-HL	16'-6" Tub Std Side, Outside Mnt Ram, Air Hi-Lift Tail-Gate, Hi-Sides
AML5002E	22' Std Side, Outside Mnt Ram, Hi-Sides
AML5002E-HL	22' Std Side, Outside Mnt Ram, Air Hi-Lift Tail-Gate, Hi-Sides

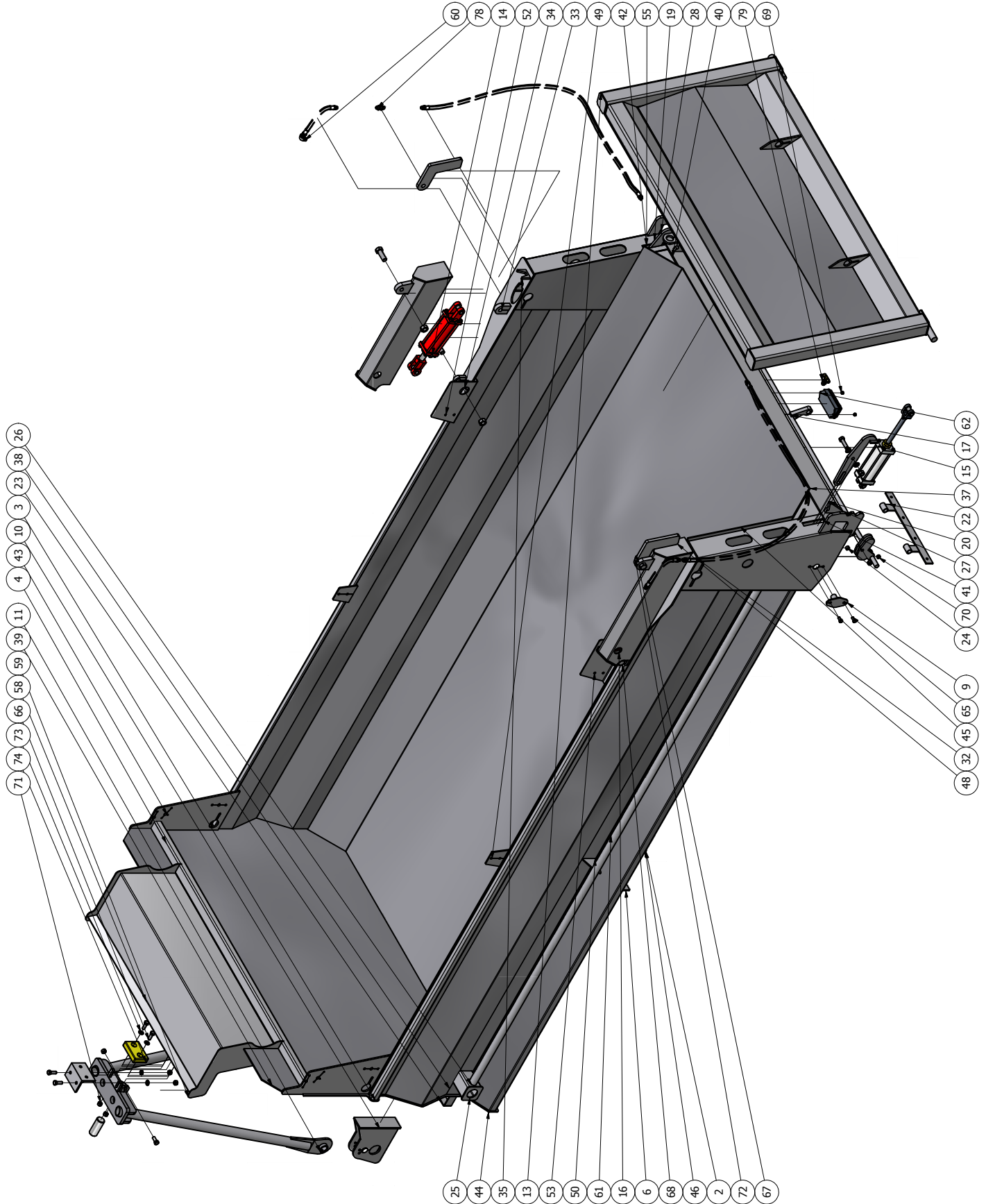
Part Number	Description
AML5001F	16'-6" Tub Std Side, Outside Mnt Ram, 2008+
AML5001F-HL	16'-6" Tub Std Side, Outside Mnt Ram, Air Hi-Lift Tail-Gate, 2008+
AML5002F	22' Tub Std Side, Outside Mnt Ram
AML5002F-HL	22' Tub Std Side, Outside Mnt Ram, Air Hi-Lift Tail-Gate

Part Number	Description
AML5001H	16'-6" Tub Std Side, Outside Mnt Ram
AML5001H-HL	16'-6" Tub Std Side, Outside Mnt Ram, Hydraulic Hi-Lift Tail-Gate, 2008+
AML5002H	22' Tub Std Side, Outside Mnt Ram, 2008+
AML5002H-HL	22' Tub Std Side, Outside Mnt Ram, Hydraulic Hi-Lift Tail-Gate, 2008+

Part Number	Description
AML5001L	16'-6" Fleet Std Side, Outside Mnt Ram, 2008+
AML5001L-HL	16'-6" Fleet Std Side, Outside Mnt Ram, Hydraulic Hi-Lift Tail-Gate, 2008+
AML50022	22' Fleet Std Side, Outside Mnt Ram, 2008+
AML5002L-HL	22' Fleet Std Side, Outside Mnt Ram, Hydraulic Hi-Lift Tail-Gate, 2008+



### AML5001L-HL 16'-6" Hydraulic High-Lift Parts Break-Down





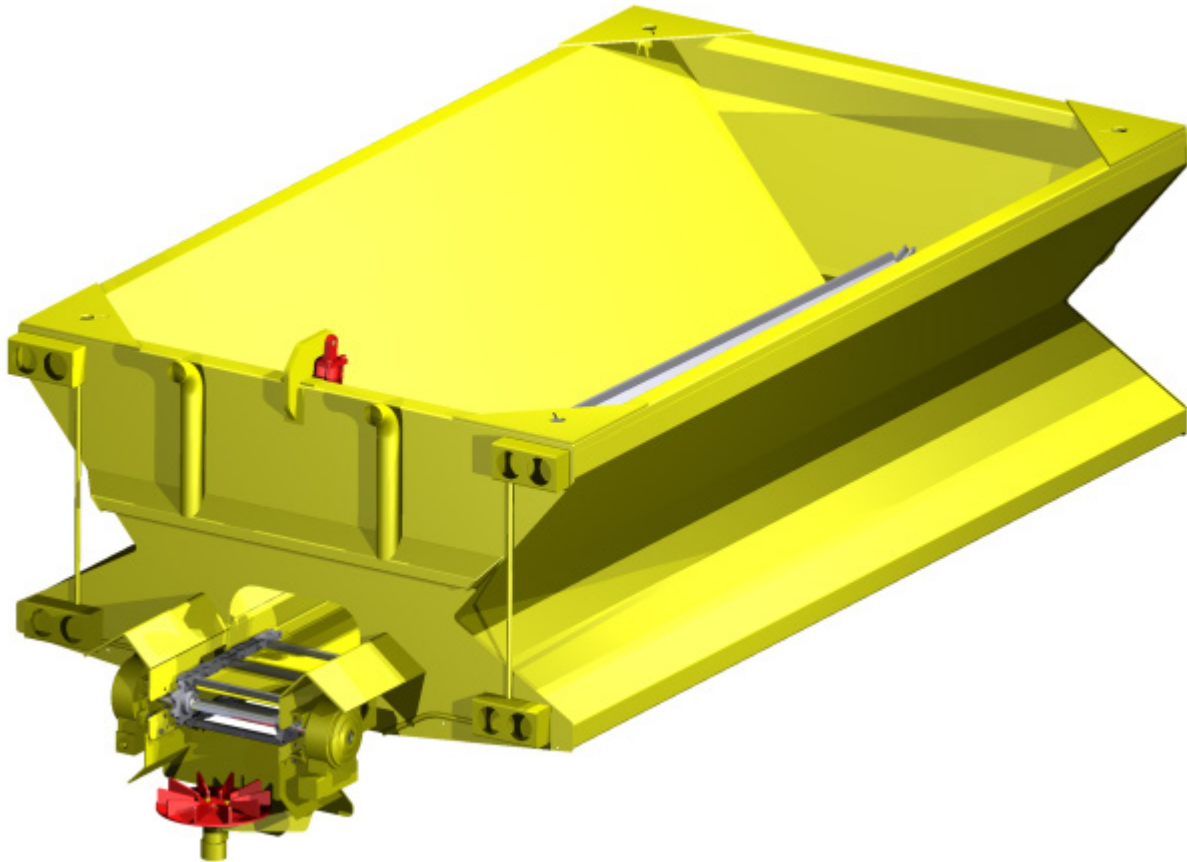
AML5001L-HL 16'-6" Hydraulic High-Lift  
Parts Break-Down

PARTS LIST			
ITEM	QTY	PART NUMBER	DESCRIPTION
1	2	A-2109	Base Mount: Tarp Cylinder
2	2	A-2113	Tarp Pivot Housing: Bolt-on
3	353.536 in	AISC - 2x2x1/4 - 176.7681	Tube
4	89.251 in	AISC - 3x2x3/16 - 89.2505	Tube
5	1	AMG4001B-40	5 X 4 X 1/2 Trip Cylinder Mount Base PL
6	2	AML1408	Mud-Flap Mounting Strip
7	1	AML2012	Tube Holder: 2 1/2" X .5
8	1	AML3649	Serial Mounting Plate
9	2	AML5120	Housing, Cross-Shat Trip Lever
10	2	AML5240	Ram: 4 1/4" x 14"
11	1	AML5248B	A-Frame Hoist: 40t Ram
12	1	AML5260	Gravel Box Frame Limit Plate
13	1	AML5400D	Tail-Gate: Fleet-Side
14	2	AML5418	Ram: 3" x 8": O-20.5, Ex-28.5
15	1	AML5418A	Tail-Gate Air Cylinder: Economax
16	2	AML5428H	Hydraulic Hi-Lift Arm Assy
80	2	AML5480	Upper Hydraulic High-Lift Hose
81	2	AML5482	Lower Hydraulic High-Lift Hose
17	1	AMM00400	Trip Shaft Assembly
18	2	AMRS001B-01B	Main Formed Sill: GB16600
19	2	AMRS001B-15B	Trip Lever Assembly
20	2	AMRS001B-17	Tail-Gate Lower Support Lug
21	1	AMRS001B-40	Mount Lug, T/G Cylinder
22	2	AMRS001B-80	Gravel Box Rear Mudflap Hanger
23	1	AMRS001C-26	Formed Step Rung
24	2	AMRS001C-30	Roller Sleeve: Case Hardened
25	2	AMRS001D-50	ID Light Box Cap Plate: Tub Box
26	11.000 inch	AMRS001D-51	Front ID Light Box Housing
27	2	AMRS001D-54	Rear Bumper/Guard
28	1	AMRS001F-05	MSFB 3/8 x 6 x 101.8125
29	2	AMRS001F-12	Tarp Pivot Bushing : 1 1/4" sch 40 pipe
30	2	AMRS001F-13	Trip Pivot Housing : 1" sch 40 pipe
31	2	AMRS001F-66	Air Tarp End Mnt Bracket
32	2	AMRS001H-32	Tower Cap Plate: Hydraulic Hi-Lift
33	2	AMRS001H-33	Cylinder Mount Rib: Hi-Lift
34	4	AMRS001H-34	Hinge Side Lug: Hi-Lift Arm Mount
35	2	AMRS001H-38	Hi-Lift Center/Guide Lug
36	2	AMRS001H-61	Rear Electrical Conduit: 1.75 x .125 dom
37	1	AMRS001K-01B	Floor Plate: Fleet-Side Single Plate
38	2	AMRS001K-04B	Side Panel: Fleet-Side 16'-6" Box
39	2	AMRS001K-11	Deflector Fill Plate: 1/4 x 10 msfb
40	2	AMRS001K-22	Rear Tower Lower Fill Plate: Fleet-Side
41	1	AMRS001L-05L	Rear Tower: Hydraulic Hi-Lift Fleet-Side
42	1	AMRS001L-05R	Rear Tower: Hydraulic Hi-Lift Fleet-Side
43	2	AMRS001L-07	Front Side Fill/Mount Plate: Fleet-Side
44	1	AMRS001L-08	Front Bulkhead Plate: 102" x 60"
45	2	AMRS001L-09	Fleet-Side Rear Tower Inside Fill Plate
46	2	AMRS001L-10	Fender: Fleet-Side Box: 22"
47	2	AMRS001L-12	Rear Tower Front Rib: Fleet-Side
48	2	AMRS001L-16	Hi-Lift Tail-Gate Hinge
49	2	AMRS001L-34	Mid Plank Mount Plate: Fleet-Side
50	2	AMRS001L-56	Elect Tube Hdder: Fleet-Side Box
51	2	AMRS001L-60	Box Spread Chain Lock Plate
52	1	AMRS001L-62	Rear Mount Plate: Side Board RH
53	1	AMRS001L-64	Rear Mount Plate: Side Board LH
54	2	AMRS001L-66	Shovel Bracket: 3/8" HR x 4"
55	1	AMRS001M-05R	Rear Tower: Hydraulic Hi-Lift Fleet-Side
56	1	AMRS002H-62	Mnt Plate: 3/4" ORB Bulkhead Tee Mount
57	1	AMRS010-55	Licence Plate Light Bracket
58	1	AMRS200F-01	Canopy
59	2	AMRS200F-02	Canopy Side Cap Plate
60	2	ASME B16.3 90 Deg Street Elbow - Class 150 1/2	Malleable Iron Threaded Fittings 90 Deg Street Elbow - Class 150
61	2	ASTM A 53/A 53M Pipe 1 1/2 - Schedule 40 - 169.1551	Pipe
62	1	BER22010	Junction Box: 7 Pole
63	2	BLT8C05-16	5/16 X 1
64	4	BLT8C06-16	3/8 X 1
65	4	BLT8C08-16	1/2 X 1 UNC-8 Cap Screw
66	2	BLT8C10-28	5/8 X 1 3/4 UNC8 Hex Bolt
67	2	BLT8C16-48	1 X 3 UNC G8 Cap Screw
68	2	BLT8C16-56	1 X 3 1/2 UNC Gr 8 Bolt
69	6	BLT8CLNT06	3/8 UNC8 Lock Nut
70	4	BLT8CLNT08	1/2 UNC8 Lock Nut
71	2	BLT8CLNT10	5/8 UNC Gr8 Lock Nut
72	4	BLT8CLNT16	1" UNC8 Lock Nut
73	2	BLT8FW10	5/8 SAE Flat Washer
74	1	MISR-5310	Urethane Bumper Block: Bolt-On
75	8	MISZERK-02	ZERK FITTING: 1/8" NPT
77	2	WHF1869X04X04	Male Elbow 90: 1/4 - 1/4 MNPT
78	2	WHF53035-08-08	
79	1	WHF53845-8	#8 - JIC Bulkhead Tee



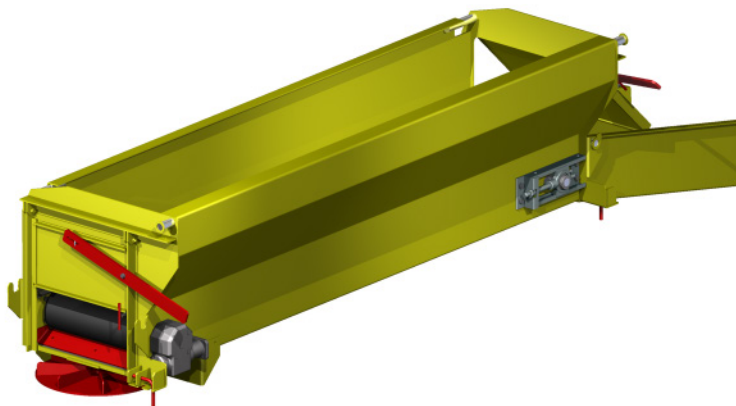


## Sanders / Discharge Unit



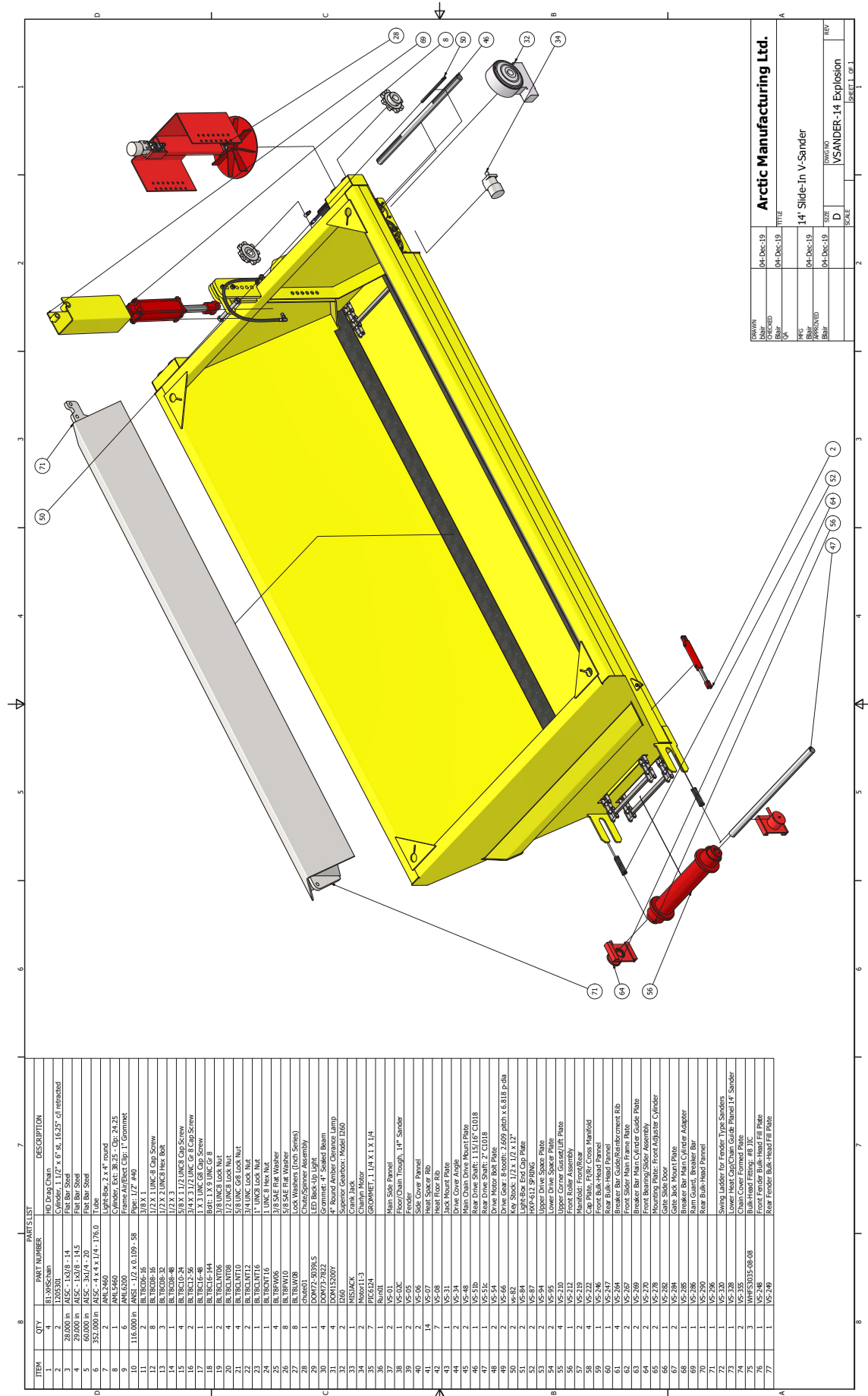
### VS-14 Heavy Duty Exhaust Heated Sander

Dual Side Walls • QT-100 V-Sides & Floor • 88HDX Heavy Duty Chain • 1 1/4" Square QT-100 Cross Chain Bars • 2" Drive Shaft • Single or Dual Drives • Hydraulic Breaker Bar - Power Up/Gravity Down •



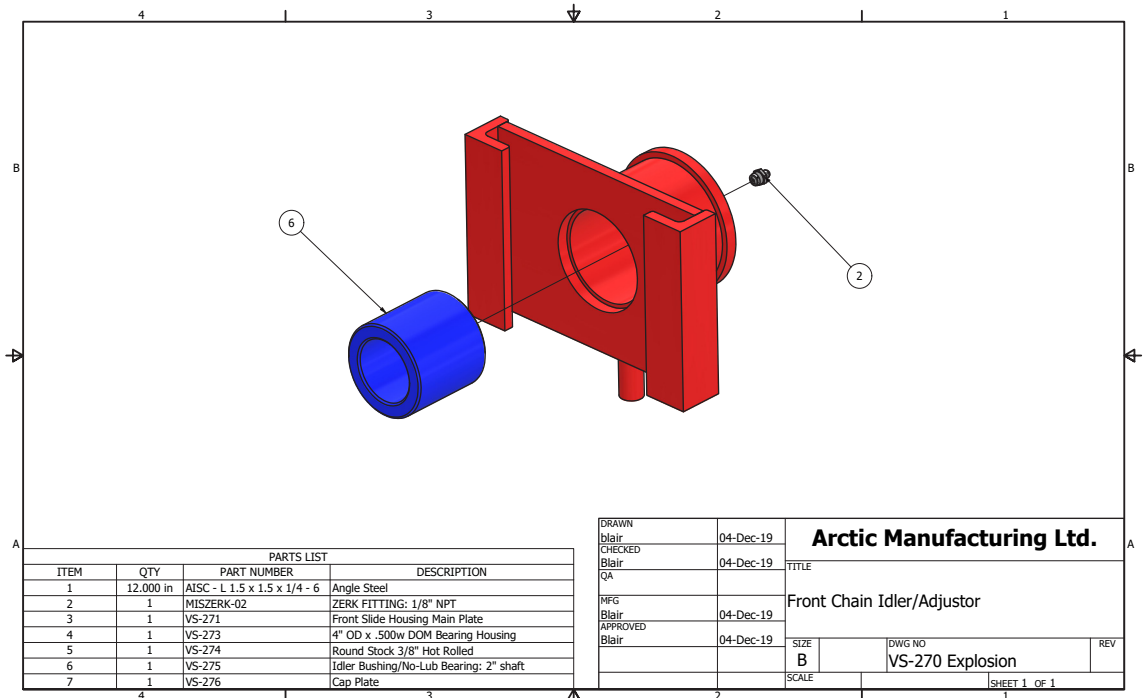
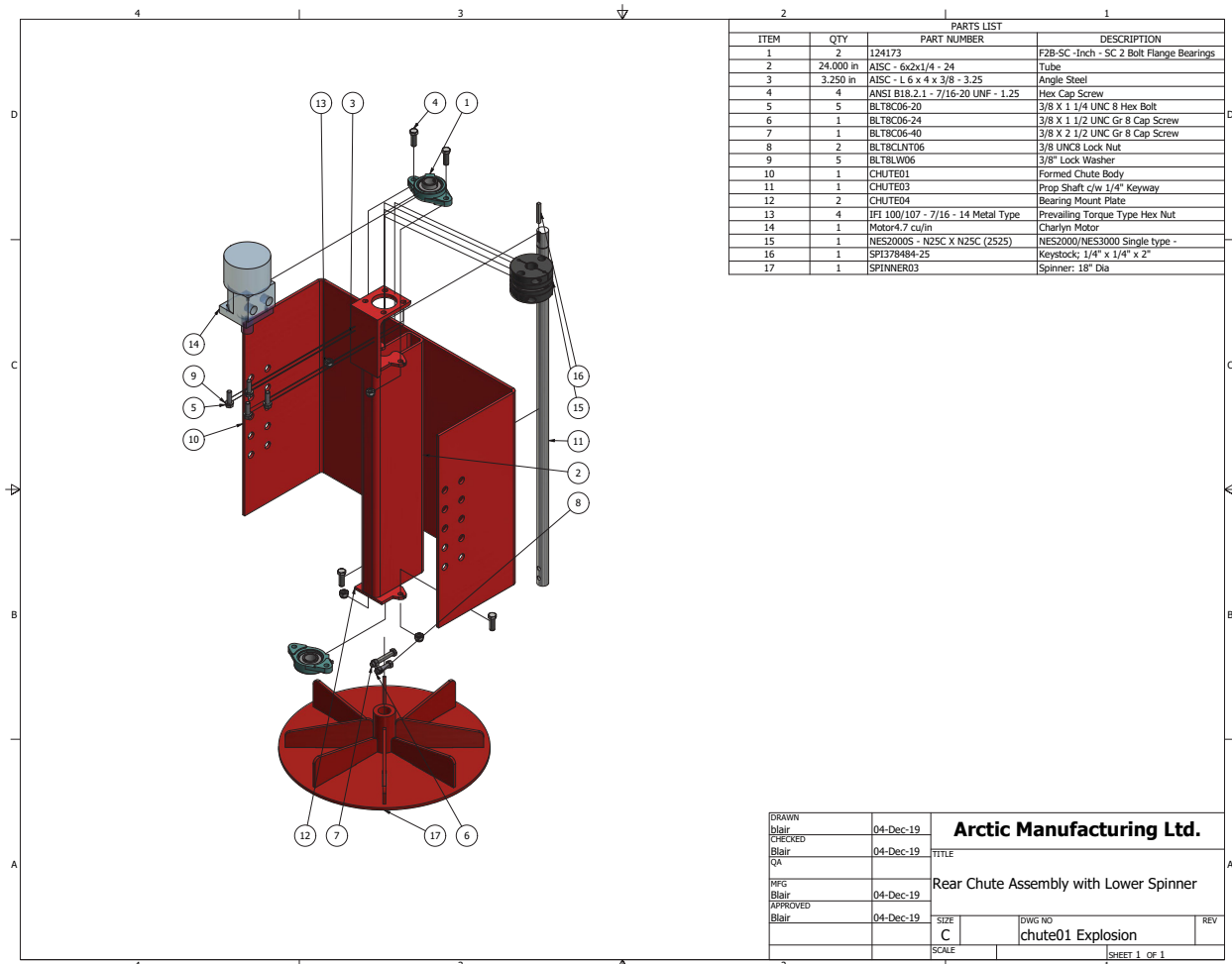
### Tail-Gate Sander / Side Discharger

LH or RH Discharge • End Swing-Up Doors with Internal Slide Doors • 1/4" x 18" HD Rubber Belt • Clip-On Discharge Chute • Spinner/Sander Option Available - Bolt-On •



DRAWN	04-Dec-19	ARTIC Manufacturing Ltd.
CHKD	04-Dec-19	TITLE
ENGR	04-Dec-19	14' Slide-In V-Sander
APP'D	04-Dec-19	DATE
REV	D	SCALE
		1:1

ITEM	QTY	PART NUMBER	DESCRIPTION
1	4	81-MSC-Chain	HD Drag Chain
2	1705-301	Cylinder, 1 1/2" x 6" sl. 16.25" of retracted	
3	28-000 in	AISC - 1/2" x 6" x 16.25" of retracted	
4	60-000 in	AISC - 3/4" x 6" x 16.25" of retracted	
5	60-000 in	AISC - 3/4" x 4" x 16.25" of retracted	
6	352-000 in	AISC - 4 x 4 x 1/4 - 176.0	
7	2	AM2-2460	Light-Box 2 x 4" round
8	2	AM2-2460	Light-Box 2 x 4" round
9	6	AM2-2460	Light-Box 2 x 4" round
10	116-000 in	ANST - 1/2" x 0.109" x 58	
11	2	BR-18205-15	3/8 X 1
12	8	BR-18205-15	3/8 X 1
13	8	BR-18205-15	3/8 X 1
14	1	BR-18205-15	3/8 X 1
15	4	BR-18205-15	3/8 X 1
16	2	BR-18205-15	3/8 X 1
17	1	BR-18205-15	3/8 X 1
18	1	BR-18205-15	3/8 X 1
19	2	BR-18205-15	3/8 X 1
20	4	BR-18205-15	3/8 X 1
21	4	BR-18205-15	3/8 X 1
22	1	BR-18205-15	3/8 X 1
23	1	BR-18205-15	3/8 X 1
24	1	BR-18205-15	3/8 X 1
25	4	BR-18205-15	3/8 X 1
26	4	BR-18205-15	3/8 X 1
27	8	BR-18205-15	3/8 X 1
28	1	CH-6021	Chassis/Suspension Assembly
29	1	DMW72-5039LS	LED Backup Light
30	4	DMW72-7822	Grummer, 4" Sealed Beam
31	2	DMW72-7822	Grummer, 4" Sealed Beam
32	2	DMW72-7822	Grummer, 4" Sealed Beam
33	1	MIS-MAX	Crank Jack
34	2	Motor11-3	Motor
35	7	PG-6124	PG-6124
36	2	US-01	US-01
37	2	US-01	US-01
38	1	US-04	US-04
39	2	US-05	US-05
40	2	US-07	US-07
41	14	US-07	US-07
42	7	US-08	US-08
43	1	US-31	US-31
44	2	US-34	US-34
45	2	US-34	US-34
46	1	US-51b	US-51b
47	1	US-51c	US-51c
48	2	US-54	US-54
49	2	US-54	US-54
50	2	US-82	US-82
51	2	US-84	US-84
52	2	US-87	US-87
53	2	US-94	US-94
54	2	US-94	US-94
55	4	US-210	US-210
56	1	US-212	US-212
57	2	US-219	US-219
58	4	US-246	US-246
59	2	US-246	US-246
60	1	US-247	US-247
61	4	US-264	US-264
62	2	US-269	US-269
63	2	US-269	US-269
64	2	US-270	US-270
65	2	US-278	US-278
66	1	US-282	US-282
67	2	US-288	US-288
68	2	US-288	US-288
69	1	US-288	US-288
70	1	US-290	US-290
71	1	US-296	US-296
72	1	US-308	US-308
73	1	US-308	US-308
74	2	US-305	US-305
75	3	WHF53035-08-08	WHF53035-08-08
76	1	US-248	US-248
77	1	US-249	US-249

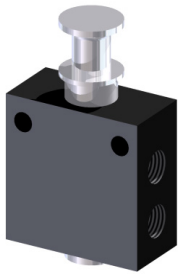




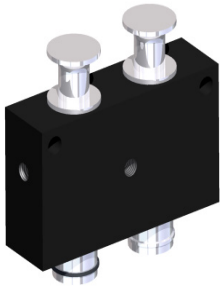


## Cab Controls / Switches





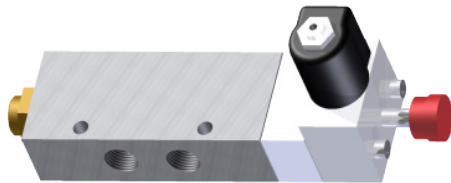
Part Number	Description
AML5170	1/4" Manual Push-Pull Valve



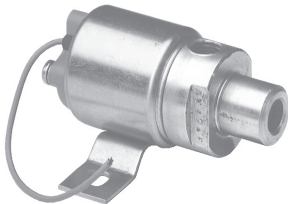
Part Number	Description
AML5172	1/4" Manual Dual Push-Pull Valve



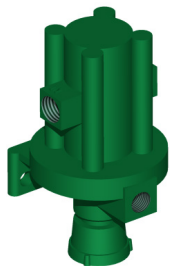
Part Number	Description
AML5173	12V DC Sol Push-Pull Valve 1/4 npt
AML5174	12V DC Sol/Sol Push-Pull 1/4 npt
AML5175	12V DC Sol/Sol Push-Pull 1/8 npt



Part Number	Description
AML5177	5 PORT 12VDC SOL,NO SUSP VALVE, MANUAL OVER-RIDE
AML5178	5 PORT 12VDC SOL,NC GATE VALVE, MANUAL OVER-RIDE

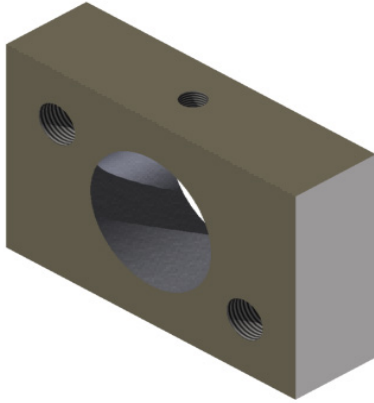


Part Number	Description
BER68320	Solenoid, 12vDC, Electric over Air



Part Number	Description
WMA111531	Relay Valve, Normally Open





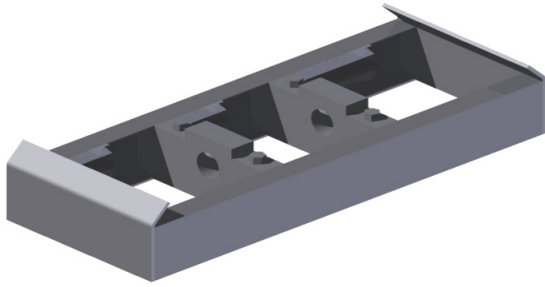
Part Number	Description
AML5230	Body Block: 1 7/8"
AML5231	Body Block: 1 1/4"



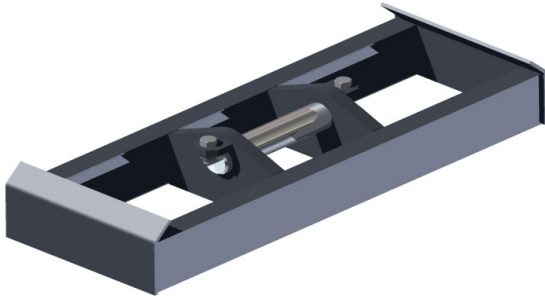
Part Number	Description
MISTGL3410ST	Tail-Gate Contaminat Latch: Steel Weld-On



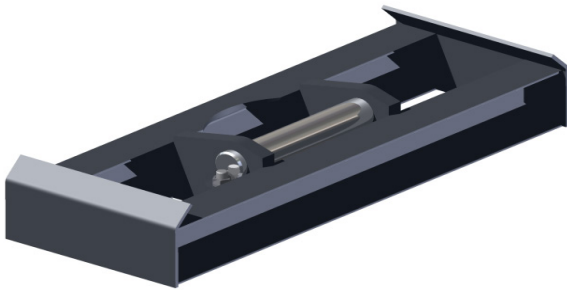
## Ram Bases - Main Lift



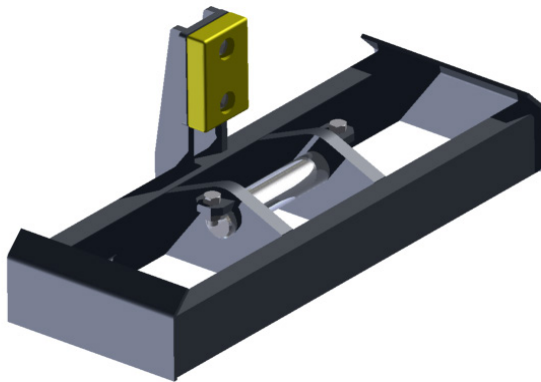
Part Number	Description
AML5233	Ram Base: Trun-Trun 25t Ram



Part Number	Description
AML5234	Ram Base: 2" x 7 1/2" 25t Ram: Dog-House Type Box



Part Number	Description
AML5238B	Ram Base: 2" x 9 3/4" 40t Ram: Dog-House Type Box, Off-Set



Part Number	Description
AML5238C	Ram Base: 2" x 7 1/2" 25t Ram: A-Frame Lift



Part Number	Description
AML5238C	Ram Base: 2" x 7 1/2" 25t Ram: A-Frame Lift, Integrated Safety Prop
AML5239C	Ram Base: 2" x 9 3/4" 40t Ram: A-Frame Lift, Off-Set, Integrated Safety Prop



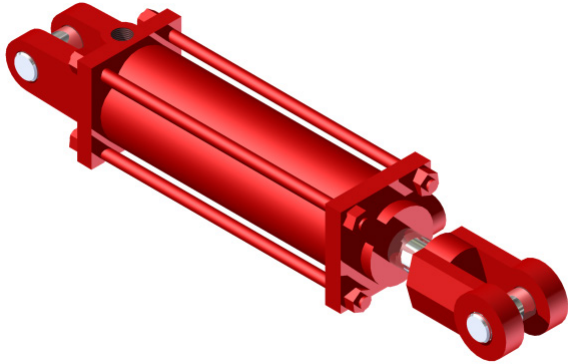
Part Number	Description
AML5240	Body Bracket: A-Frame Lift



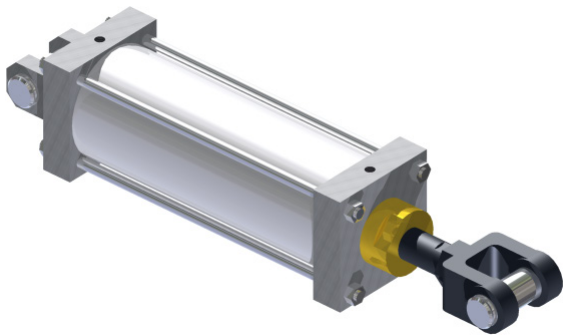
Part Number	Description
AML5246B	A-Frame: 25t Ram
AML5248B	A-Frame: 40t Ram



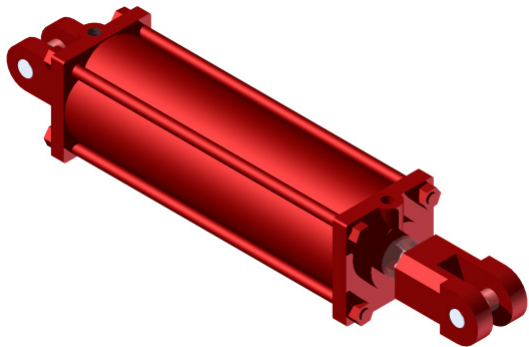
## Secondary Cylinders



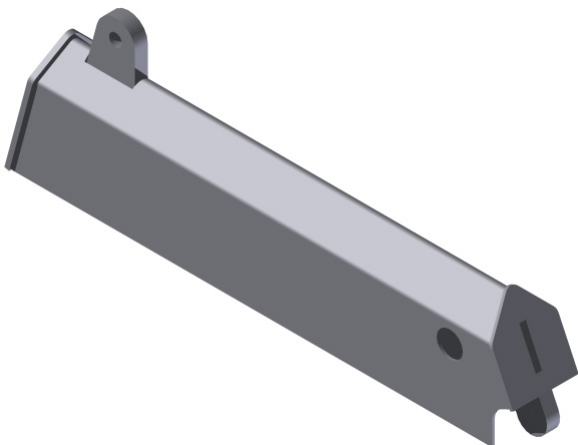
Part Number	Description
AML5418	Ram, Hydraulic: 3" b x 8" s



Part Number	Description
AML5418-AR	Ram, Air: 3 1/4" b x 8" s



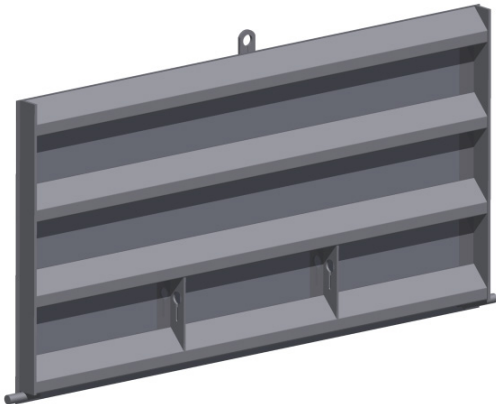
Part Number	Description
AML5460	Ram, Hydraulic: 4" b x 14" s



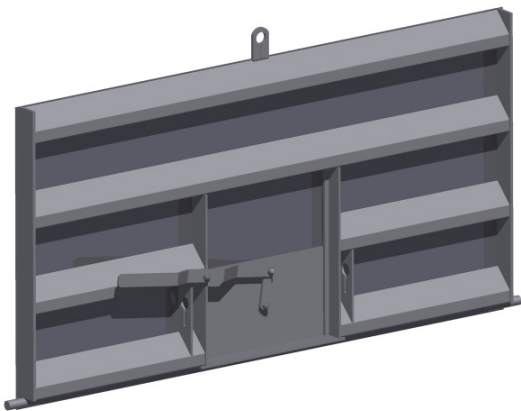
Part Number	Description
AML5428H	High-Lift Arm: Hydraulic Lift



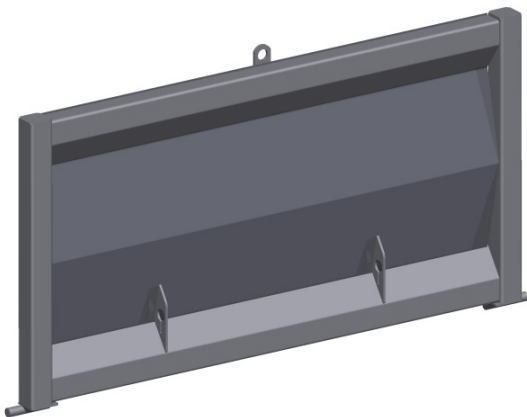
# Tail-Gates



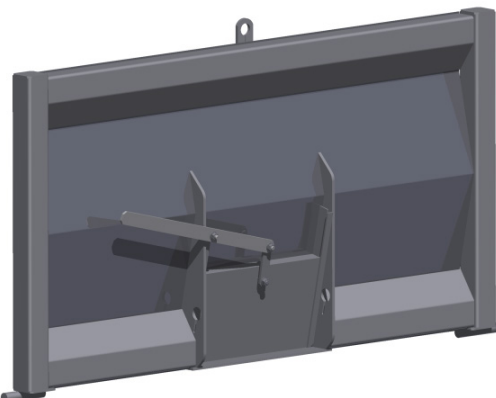
Part Number	Description
AML5400B	Tail-Gate



Part Number	Description
AML5400B-B	Batch Tail-Gate



Part Number	Description
AML5400D	Tail-Gate, Upper/Lower Welded Ribs
AML5400E	Tail-Gate, Smooth Finish



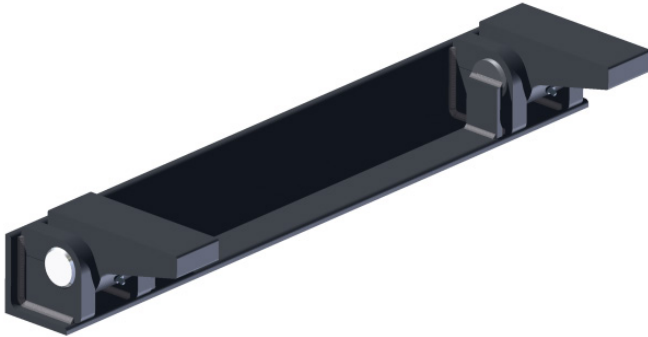
Part Number	Description
AML5400C-B	Batch Tail-Gate

Custom Tail-Gates also Available

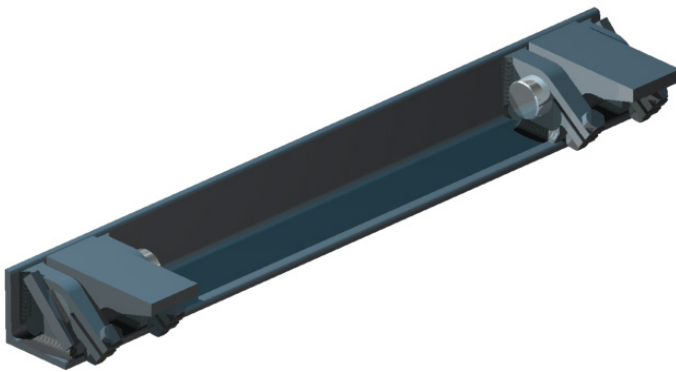




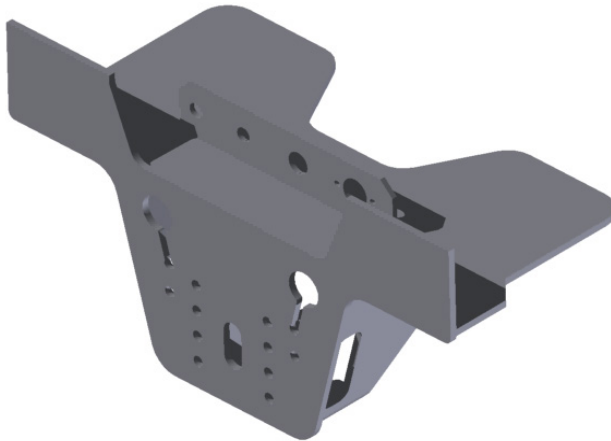
## Tipping Sill / Apron



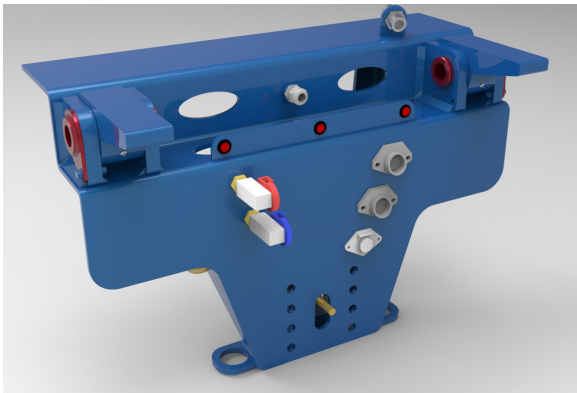
Part Number	Description
AML5500	Tipping Sill: 35t - 2" Pin
AML5510	Tipping Sill: 45t - 2 1/2" Pin



Part Number	Description
AML5500A	Tipping Sill 35t - 2" Pin Clamp-Type



Part Number	Description
AML2457	Rear Apron Assembly

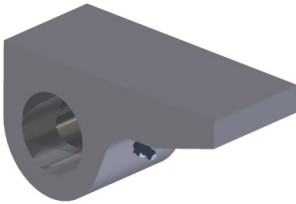


Part Number	Description
AML2458	Rear Apron/Hinge Assembly, 2 1/2" Hinge Pins

\*Fittings, Glad-Hands, Lights & Air Pot - Not Included\*

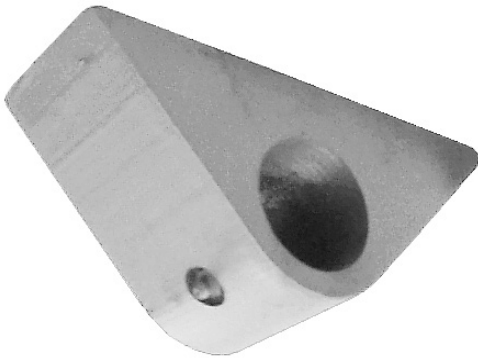


Part Number	Description
AML5292	Frame Mount Spool Plate: fits 2 & 3 bank V90 Series spools



Part Number	Description
AML5503	Upper Hinge Lug: 35t - 2" Pin
AML5505M	Upper Hinge Lug: 45t - 2 1/2" Pin

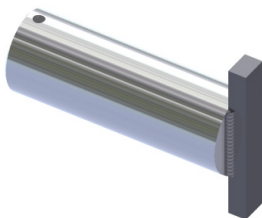
Direct Replacement:  
 Arctic & Mailhot Hinges



Part Number	Description
AML5502	Upper Hinge Lug: 35t - 2" Pin

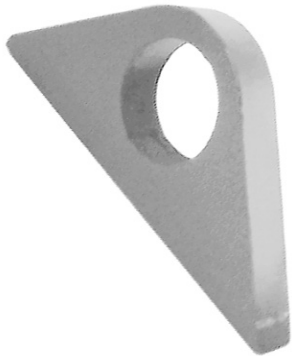


Part Number	Description
AML5502K	Knight Upper Hinge Lug: 2 1/2" Pin

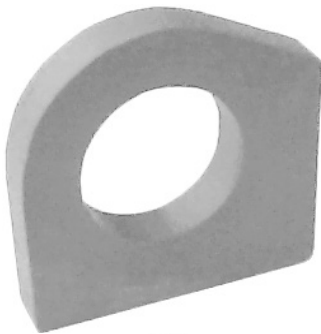


Part Number	Description
AML5503	Hinge Pin: 35t - 2" Pin
AML5503K	Hinge Pin: 45t - 2 1/2" Pin

Direct Replacement:  
 Arctic & Mailhot Hinges



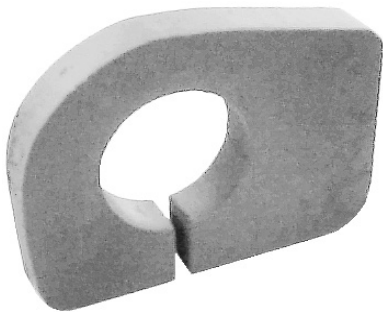
Part Number	Description
AML5504K	Arctic Lower Hinge Lug: 2"



Part Number	Description
AML5504K	Knight Lower Lug: 2 1/2"



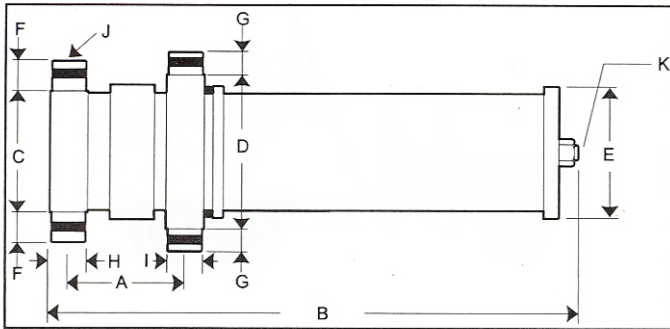
Part Number	Description
NAHMA15120	Nahanni Upper Lug: 2"



Part Number	Description
NAHMA15125	Nahanni Lower Lug: 2"

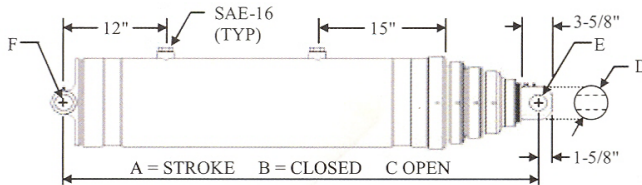


# Main Lift Cylinders



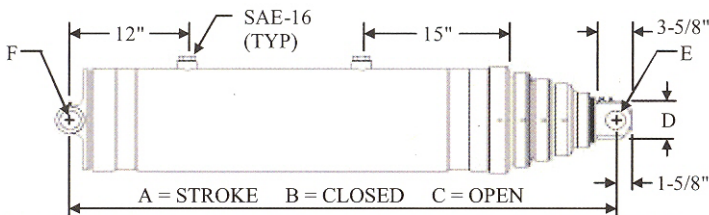
<b>A-</b>	<b>4-7/8</b>	<b>E-</b>	<b>7-3/4</b>	<b>I-</b>	<b>1-7/8</b>
<b>B-</b>	<b>56-7/8</b>	<b>F-</b>	<b>2</b>	<b>J-</b>	<b>SAE12</b>
<b>C-</b>	<b>7</b>	<b>G-</b>	<b>1-1/4</b>	<b>K-</b>	<b>1-14</b>
<b>D-</b>	<b>9</b>	<b>H-</b>	<b>1-7/8</b>	<b>Stroke:</b>	<b>151-3/4</b>
<b>Contains 9.7US gals.</b>			<b>Weight: 365 lbs</b>		

Part Number	Description
AML5700	Trunnion-Trunnion Ram: 30 ton



<b>A-</b>	<b>156-1/16</b>	<b>E-</b>	<b>Ø1-9/16" x 2-7/8" width</b>
<b>B-</b>	<b>53-5/8</b>	<b>F-</b>	<b>Ø2-1/16" x 7-1/4" width</b>
<b>C-</b>	<b>209-11/16</b>	<b>Contains:</b>	<b>14.6 gal.</b>
<b>D-</b>	<b>Ø 2-7/8</b>	<b>Weight:</b>	<b>303 lbs.</b>

Part Number	Description
AML5710	Pin-Pin Ram: 25 ton



<b>A-</b>	<b>183-1/8</b>	<b>E-</b>	<b>Ø2" x 2" width</b>
<b>B-</b>	<b>53-7/8</b>	<b>F-</b>	<b>Ø2-1/16" x 9-1/2" width</b>
<b>C-</b>	<b>237</b>	<b>Contains:</b>	<b>28.7 gal.</b>
<b>D-</b>	<b>3-1/4</b>	<b>Weight:</b>	<b>545 lbs.</b>

Part Number	Description
AML5720	Pin-Pin Ram: 40 ton

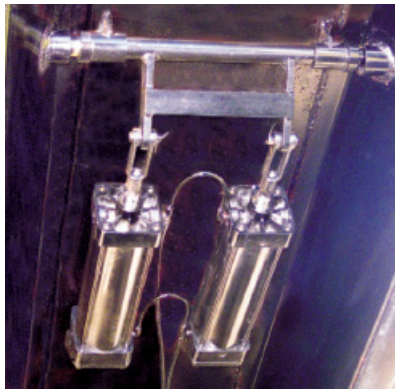
Standard stocking sizes shown. Other sizes are available. Please supply (A-F) dimensions and Pin or Trunnion type.



# Tarps



## Pioneer-Coverall Air-Powered Tarp Systems

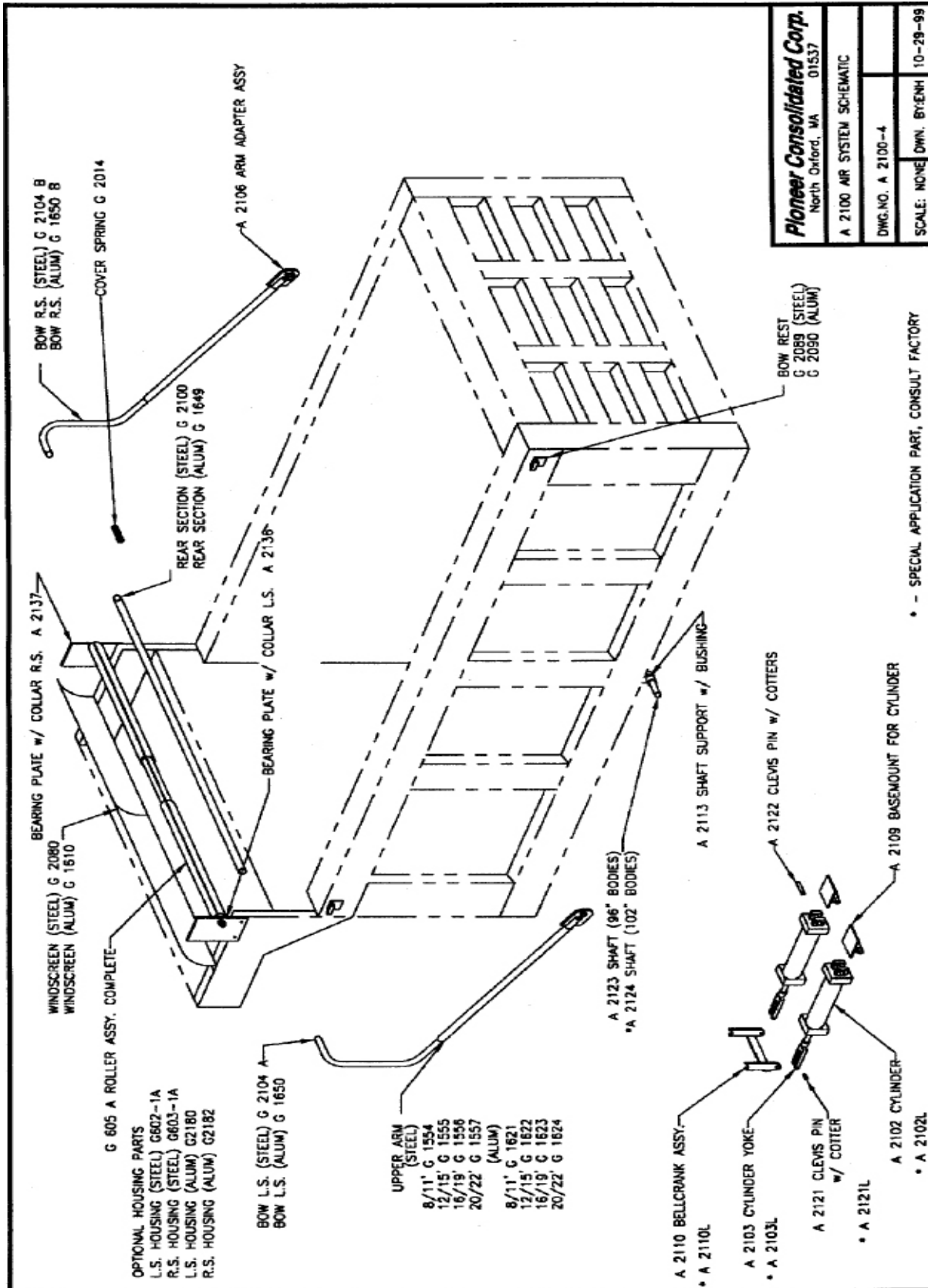


Dual Double-Acting Under-Mount Air-Rams  
1 1/4" C1018 Cross-Pivot Shaft



In-Cab Air-Control Switch





<b>Pioneer Consolidated Corp.</b>	
North Oxford, MA 01537	
A 2100 AIR SYSTEM SCHEMATIC	
DWG. NO. A 2100-4	
SCALE: NONE DWN. BY: ENH 10-29-99	

\* - SPECIAL APPLICATION PART, CONSULT FACTORY



## Dump-Box Tarps

Part Number	Description
AML5820	Tarp, Asphalt, HD, 7' x 22'
AML5822	Tarp, Asphalt, HD, 7' x 25'
AML5824	Tarp, Mesh, 7' x 22'
AML5825	Tarp, Mesh, 7' x 25'



## Wet - Kit / Hydraulics



# Muncie Power

PTO's, Pumps, Controls, Tank Kits, Filters



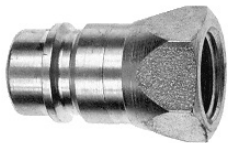


## In-House Custom Made Hydraulic Hose with Crimp-On Fittings for the Following Sizes

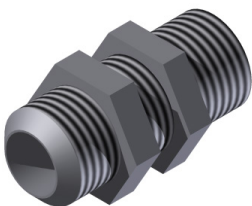
Part Number	Description
WHF04-R2T	1/4" Double Braid, Smooth Finnish
WHF06-R2T	3/8" Double Braid, Smooth Finnish
WHF08-R2T	1/2" Double Braid, Smooth Finnish
WHF12-R2T	3/4" Double Braid, Smooth Finnish
WHF16-R2T	1" Double Braid, Smooth Finnish

### Fittings for:

NPT, JIC, SAE  
Straight and 90°  
Standard and Swivel



Part Number	Description
WHF4010-6P	Pioneer Male Coupler 1" NPT
WHF4050-6P	Pioneer F/Male Coupler
WHF5205-6	Cap F/Male Coupler 1" NPT
WHFH6-66M	Cap Male Coupler



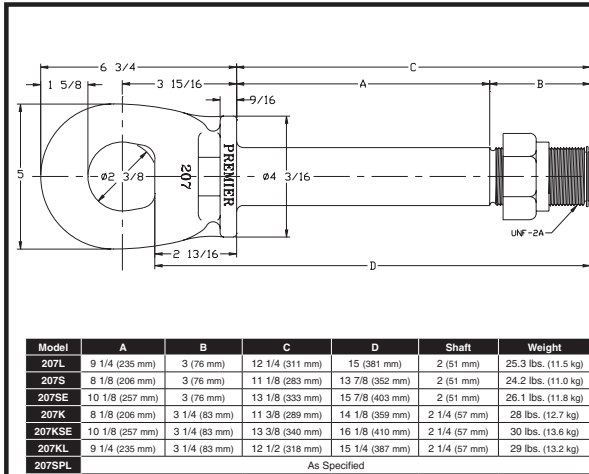
Part Number	Description
WHF1516H-16-16	Bulkhead Fitting 1" JIC/1"NPT



## Drawbar & Hitch Components



## Swivel Drawbar Eyes



### 207 Swivel Eye

See pages 57 & 58 for Front End Assemblies.

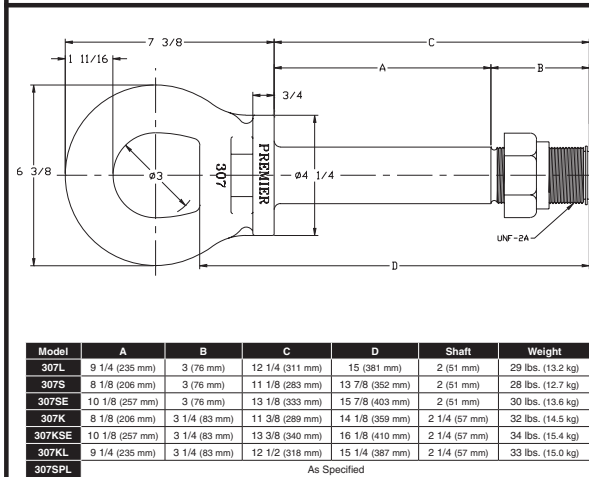
- Parts Included:**
- 416 / \*416K Locknut
  - 208 / \*208SPL Snap Ring

\*For use with 207K, 207KL, 207KSE models only.



#### SPECIFICATIONS

<b>Maximum Gross Trailer Weight:</b>	90,000 lbs.	(40,823 kg)
<b>Maximum Tongue Weight:</b>	2,500 lbs.	(1,133 kg)
<b>Inside Diameter:</b>	2 3/8 in.	(60 mm)
<b>Unit Weight:</b>	See chart	



### 307 Swivel Eye

See pages 57 & 58 for Front End Assemblies.

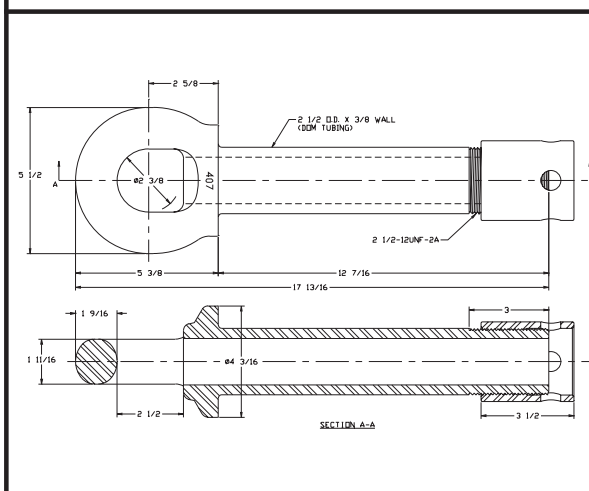
- Parts Included:**
- 416 / \*416K Locknut
  - 208 / \*208SPL Snap Ring

\*For use with 307K, 307KL, 307KSE models only.



#### SPECIFICATIONS

<b>Maximum Gross Trailer Weight:</b>	150,000 lbs.	(68,038 kg)
<b>Maximum Tongue Weight:</b>	2,500 lbs.	(1,133 kg)
<b>Inside Diameter:</b>	3 in.	(76 mm)
<b>Unit Weight:</b>	See chart	



### 407SE Swivel Eye

\*Silver Eagle replacement (#1171)

See pages 57 & 58 for Front End Assemblies.

- Parts Included:**
- 421 Sleeve Nut, Nut must be secured by installer (wire tied, etc.)

\*Silver Eagle is a registered trademark of Silver Eagle Co.



#### SPECIFICATIONS

<b>Maximum Gross Trailer Weight:</b>	100,000 lbs.	(45,359 kg)
<b>Maximum Tongue Weight:</b>	3,900 lbs.	(1,769 kg)
<b>Inside Diameter:</b>	2 3/8 in.	(60 mm)
<b>Unit Weight:</b>	20 lbs.	(9.1 kg)

#### IMPORTANT GUIDELINES that apply to all Premier Swivel Drawbar Eyes

- Never attempt weld repair of damaged or worn drawbar eyes
- Never attempt to use a swivel-type drawbar eye with a swivel-type coupling
- Air adjusted drawbar eyes must be used with an air service chamber or #500 slack adjuster
- Clean and inspect drawbar eyes and eye assemblies for damage or excessive wear frequently
- Assembly to which eye is attached must be of sufficient strength to withstand load rating of eye
- Do not bind-up (Jackknife) any application as stresses can cause damage to products or components, resulting in failure and detachment of the trailer while in use



## Swivel Drawbar Eyes

### 405 Swivel Adjustable Eye



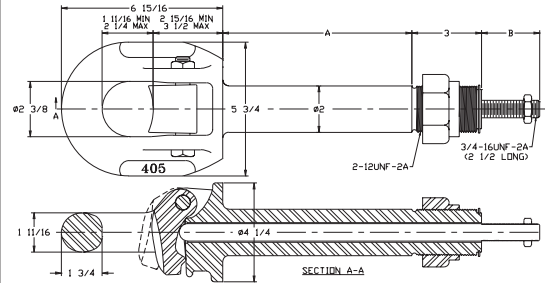
See pages 57 & 58 for Front End Assemblies.

**Parts Included:**

- 400 Shoe
- 375 Bolt
- 375A Locknut
- 416 Locknut
- 525 Jam Nut
- 208 Snap Ring
- Pushrod (see below)

**SPECIFICATIONS**

<b>Maximum Gross Trailer Weight:</b>	90,000 lbs.	(40,823 kg)
<b>Maximum Tongue Weight:</b>	3,700 lbs.	(1,678 kg)
<b>Inside Diameter:</b>	See drawing	
<b>Unit Weight:</b>	See chart at right	



Model	A	B	Weight
405L	9 1/4 in. (235 mm)	3 1/8 in. (79 mm)	27.8 lbs. (12.6 kg)
405S	8 1/8 in. (206 mm)	2 1/2 in. (64 mm)	26.9 lbs. (12.2 kg)
405SE	10 1/8 in. (257 mm)	2 1/4 in. (57 mm)	28.5 lbs. (12.9 kg)

### 405 Pushrod Options

**405 Swivel Drawbar Eye:**

**Standard Pushrod Lengths:**

- 405L: 415A Pushrod - 17 1/4 in. (438 mm), right-hand thread
- 405S: 415 Pushrod - 15 1/2 in. (394 mm), right-hand thread
- 405SE: 415A Pushrod - 17 1/4 in. (438 mm), right-hand thread

**Optional Left-Hand Threaded Pushrods:**

- 415L: 15 1/2 in. (394 mm), left-hand thread
- 415AL: 17 1/4 in. (438 mm), left-hand thread

### 410 Swivel Adjustable Eye



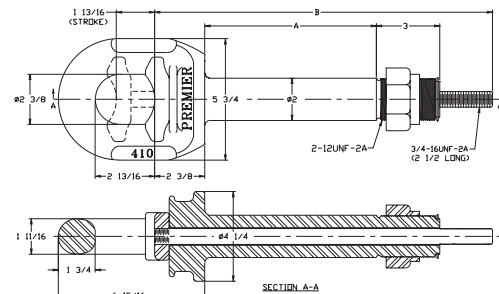
See pages 57 & 58 for Front End Assemblies.

**Parts Included:**

- 411 Shoe
- 416 Locknut
- 208 Snap Ring
- Pushrod (see below)

**SPECIFICATIONS**

<b>Maximum Gross Trailer Weight:</b>	90,000 lbs.	(40,823 kg)
<b>Maximum Tongue Weight:</b>	3,700 lbs.	(1,678 kg)
<b>Inside Diameter:</b>	See drawing	
<b>Unit Weight:</b>	See chart at right	



Model	A	B	Weight
410L	9 1/4 in. (235 mm)	17 3/4 in. (451 mm)	25.8 lbs. (11.7 kg)
410S	8 1/8 in. (206 mm)	16 in. (406 mm)	24.6 lbs. (11.2 kg)
410SE	10 1/8 in. (257 mm)	17 3/4 in. (451 mm)	26.6 lbs. (12.1 kg)

### 410 Pushrod Options

**410 Swivel Drawbar Eye:**

**Standard Pushrod Lengths:**

- 410L: 413A Pushrod - 17 3/4 in. (451 mm), right-hand thread
- 410S: 413 Pushrod - 16 in. (406 mm), right-hand thread
- 410SE: 413A Pushrod - 17 3/4 in. (451 mm), right-hand thread

**Optional Left-Hand Threaded Pushrods:**

- 413AL: 17 3/4 in. (451 mm), left-hand thread
- 413L: 16 in. (406 mm), left-hand thread

**IMPORTANT GUIDELINES that apply to all Premier Swivel Drawbar Eyes**

- Never attempt weld repair of damaged or worn drawbar eyes
- Never attempt to use a swivel-type drawbar eye with a swivel-type coupling
- Air adjusted drawbar eyes must be used with an air service chamber or #500 slack adjuster
- Clean and inspect drawbar eyes and eye assemblies for damage or excessive wear frequently
- Assembly to which eye is attached must be of sufficient strength to withstand load rating of eye
- Do not bind-up (Jackknife) any application as stresses can cause damage to products or components, resulting in failure and detachment of the trailer while in use





## 370 Air Adjusted Coupling

### ORDERING INFORMATION

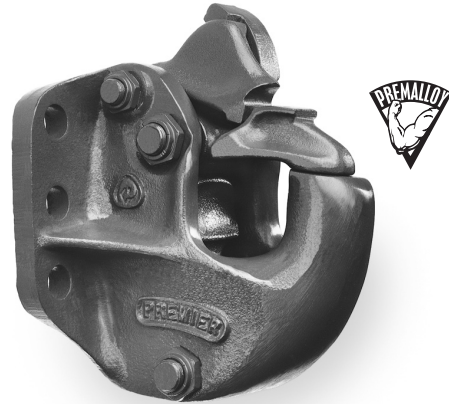
**Coupling Only:**  
- 370

**Standard Installation Kit:**

- **370A:** 370 Coupling, 502 Bolt Kit, 281 Air Chamber, 467 Air Chamber Adapter Bracket, 271 Thimble

**Optional Accessories:**

- **282 Type-30 Air Chamber (page 69):** Provides a larger diaphragm for greater shoe force compared to 281 Air Chamber.
- **Air Chamber Brackets (page 69):** 467H (3/4 in. / 19 mm), 467F (5 1/2 in. / 140 mm)
- **Thimbles (page 69):** 271B (4 3/8 in. / 111 mm), 271C (5 1/2 in. / 140 mm)
- **378 Drawbar Guides (page 68):** Helps guide drawbar eye into coupling.

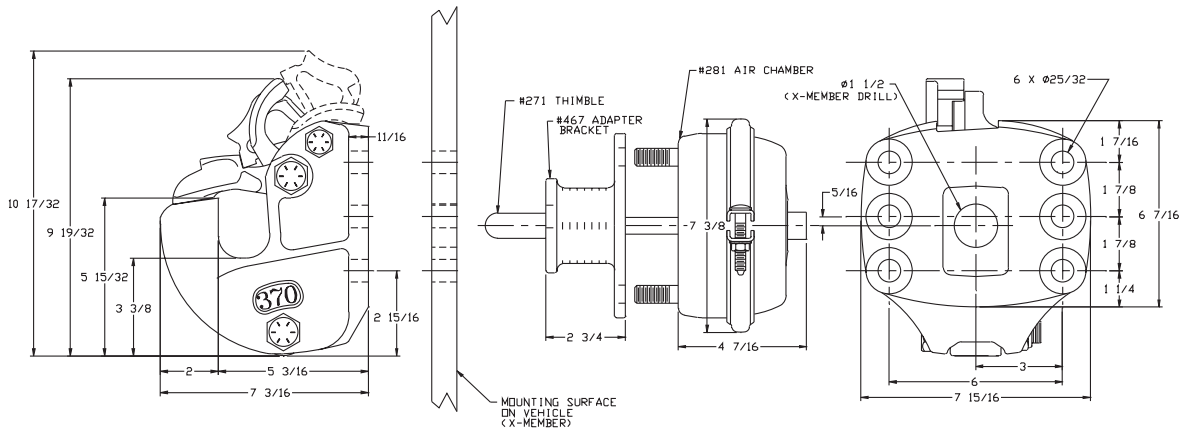


### SPECIFICATIONS

<b>Maximum Gross Trailer Weight:</b>	90,000 lbs.	(40,823 kg)
<b>Maximum Tongue Weight:</b>	18,000 lbs.	(8,164 kg)
<b>Ultimate Latch Capacity:</b>	20,000 lbs.	(9,071 kg)
<b>Maximum Eye X-Section:</b>	1 13/16 in.	(46 mm)
<b>Minimum Eye Opening:</b>	2 3/8 in.	(60 mm)
<b>Unit Weight:</b>	30 lbs.	(13.6 kg)

Used frequently in dump and pup applications, our popular 370 offers users a low profile, high latch strength and our Premalloy body for maximum wear. This coupling must be used with an air service chamber.

### STANDARD INSTALLATION DRAWING

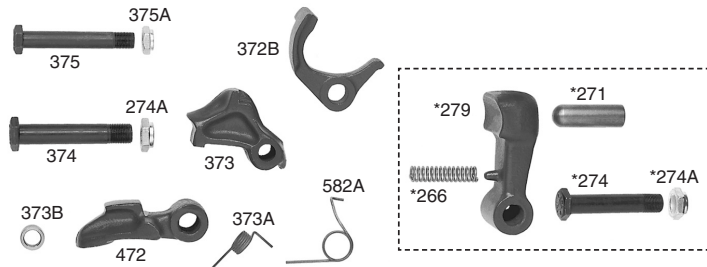


Pushrod length is 4 in. (102 mm) plus thickness of mounting structure for standard installations as illustrated.

### REPLACEMENT PART INFORMATION

**370PK Parts Kit Includes:**

- |                    |                |
|--------------------|----------------|
| 274A: Locknut      | 582A: Spring   |
| 372B: Locking Pawl | *266: Spring   |
| 373: Pawl          | *271: Thimble  |
| 373A: Spring       | *274: Bolt     |
| 373B: Spacer       | *274A: Locknut |
| 374: Bolt          | *279: Shoe     |
| 375: Bolt          |                |
| 375A: Locknut      |                |
| 472: Latch         |                |



\*Not included in parts kit, available individually.

### IMPORTANT GUIDELINES that apply to all Premier Air Adjusted Couplings

- Do not weld on any coupling assembly
- Always use Grade-8 fasteners properly torqued
- Do not apply grease to hook / horn or saddle area
- Air service chamber must be Type-24 or Type-30 with 90-120 PSI air supply
- Clean, inspect and lubricate all coupling components at a minimum of 90 day intervals
- Do not bind-up (Jackknife) any application as stresses can cause damage to products or components, resulting in failure and detachment of the trailer while in use



## 370B Air Adjusted Coupling



This coupling is designed for installations where rear clearance is a problem. Similar to our popular 370, the 370B allows for a bottom mount air can (see illustration below). This coupling must be used with an air service chamber.

### ORDERING INFORMATION

**Coupling Only:**

- 370B

**Standard Installation Kit:**

- 370BC: (Includes: 370B Coupling, 503 Bolt Kit, 281C Air Chamber, 271 Thimble)

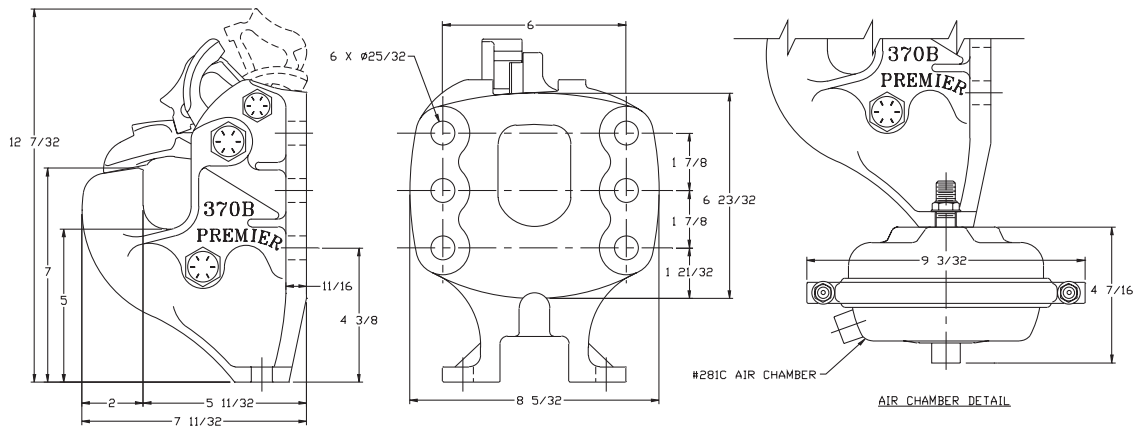
**Optional Accessories:**

- 282 Type-30 Air Chamber (page 69): Provides a larger diaphragm for greater shoe force compared to 281C Air Chamber.
- Thimbles (page 69): 271B (4 3/8 in. / 111 mm), 271C (5 1/2 in. / 140 mm)
- 378 Drawbar Guides (page 68): Helps guide drawbar eye into coupling.

### SPECIFICATIONS

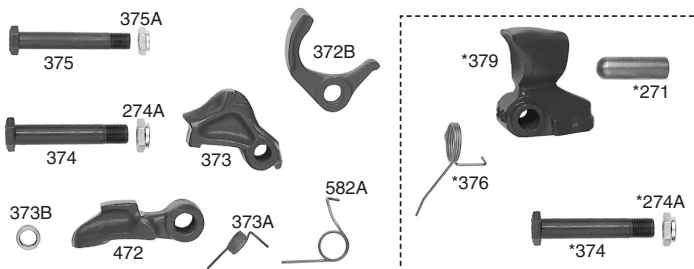
<b>Maximum Gross Trailer Weight:</b>	90,000 lbs.	(40,823 kg)
<b>Maximum Tongue Weight:</b>	18,000 lbs.	(8,164 kg)
<b>Ultimate Latch Capacity:</b>	20,000 lbs.	(9,071 kg)
<b>Maximum Eye X-Section:</b>	1 13/16 in.	(46 mm)
<b>Minimum Eye Opening:</b>	2 3/8 in.	(60 mm)
<b>Unit Weight:</b>	31 lbs.	(14.0 kg)

### STANDARD INSTALLATION DRAWING



Pushrod length is 2 3/8 in. (60 mm). Not for use with rear mount air can.

### REPLACEMENT PART INFORMATION



**370PK Parts Kit Includes:**

- |                    |                |
|--------------------|----------------|
| 274A: Locknut      | 582A: Spring   |
| 372B: Locking Pawl | *271: Thimble  |
| 373: Pawl          | *274A: Locknut |
| 373A: Spring       | *374: Bolt     |
| 373B: Spacer       | *376: Spring   |
| 374: Bolt          | *379: Shoe     |
| 375: Bolt          |                |
| 375A: Locknut      |                |
| 472: Latch         |                |

\*Not included in parts kit, available individually.

### IMPORTANT GUIDELINES that apply to all Premier Air Adjusted Couplings

- Do not weld on any coupling assembly
- Always use Grade-8 fasteners properly torqued
- Do not apply grease to hook / horn or saddle area
- Air service chamber must be Type-24 or Type-30 with 90-120 PSI air supply
- Clean, inspect and lubricate all coupling components at a minimum of 90 day intervals
- Do not bind-up (Jackknife) any application as stresses can cause damage to products or components, resulting in failure and detachment of the trailer while in use



## 2300 Air Adjusted Coupling

### ORDERING INFORMATION

**Coupling Only:**

- 2300

**Standard Installation Kit:**

- **2300A:** 2300 Coupling, 502 Bolt Kit, 281 Air Chamber, 467 Air Chamber Adapter Bracket, 271 Thimble

**Optional Accessories:**

- **282 Type-30 Air Chamber (page 69):** Provides a larger diaphragm for greater shoe force compared to 281 Air Chamber.
- **Air Chamber Brackets (page 69):** 467H (3/4 in. / 19 mm), 467F (5 1/2 in. / 140 mm)
- **Thimbles (page 69):** 271B (4 3/8 in. / 111 mm), 271C (5 1/2 in. / 140 mm)
- **378 Drawbar Guides (page 68):** Helps guide drawbar eye into coupling.

OPERATION WITH OR WITHOUT AIR SERVICE CHAMBER

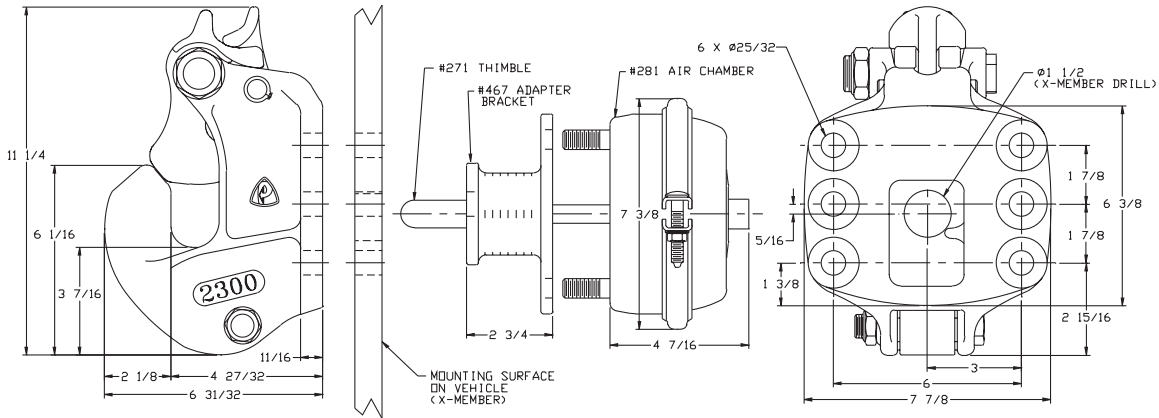


### SPECIFICATIONS

<b>Maximum Gross Trailer Weight:</b>	100,000 lbs.	(45,359 kg)
<b>Maximum Tongue Weight:</b>	20,000 lbs.	(9,071 kg)
<b>Ultimate Latch Capacity:</b>	60,000 lbs.	(27,215 kg)
<b>Maximum Eye X-Section:</b>	1 13/16 in.	(46 mm)
<b>Minimum Eye Opening:</b>	2 3/8 in.	(60 mm)
<b>Unit Weight:</b>	31.0 lbs.	(14.1 kg)

Popular with tanker fleet customers, the 2300 can be used throughout the industry. Like our 2200, the 2300 is also made from Premalloy for long life. As with all 2000 series couplings, the 2300 offers unsurpassed latch strength and can be operated with or without an air service chamber.

### STANDARD INSTALLATION DRAWING

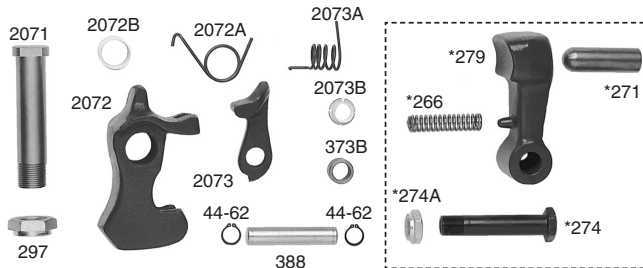


Pushrod length is 3 5/8 in. (92 mm) plus thickness of mounting structure for standard installations as illustrated.

### REPLACEMENT PART INFORMATION

**2000PK Parts Kit Includes:**

- |                      |                |
|----------------------|----------------|
| 44-62: Snap Ring (2) | 2073A: Spring  |
| 297: Locknut         | 2073B: Bushing |
| 373B: Spacer         | *266: Spring   |
| 388: Pin             | *271: Thimble  |
| 2071: Bolt           | *274: Bolt     |
| 2072: Latch          | *274A: Locknut |
| 2072A: Spring        | *279: Shoe     |
| 2072B: Bushing       |                |
| 2073: Latch Lock     |                |



\*Not included in parts kit, available individually.

### IMPORTANT GUIDELINES that apply to all Premier Air Adjusted Couplings

- Do not weld on any coupling assembly
- Always use Grade-8 fasteners properly torqued
- Do not apply grease to hook / horn or saddle area
- Air service chamber must be Type-24 or Type-30 with 90-120 PSI air supply
- Clean, inspect and lubricate all coupling components at a minimum of 90 day intervals
- Do not bind-up (Jackknife) any application as stresses can cause damage to products or components, resulting in failure and detachment of the trailer while in use



## 2300B Air Adjusted Coupling



OPERATION WITH  
OR WITHOUT AIR  
SERVICE CHAMBER

Similar to our 2300 (page 9), the 2300B offers a bottom mount air chamber design for installations where rear clearance is a problem. Like all our 2000 series, our 2300B is also made from Premalloy for long life. All 2000 series couplings can be operated with or without an air service chamber.

### ORDERING INFORMATION

**Coupling Only:**

- 2300B

**Standard Installation Kit:**

- 2300BC: 2300B Coupling, 503 Bolt Kit, 281C Air Chamber, 271 Thimble

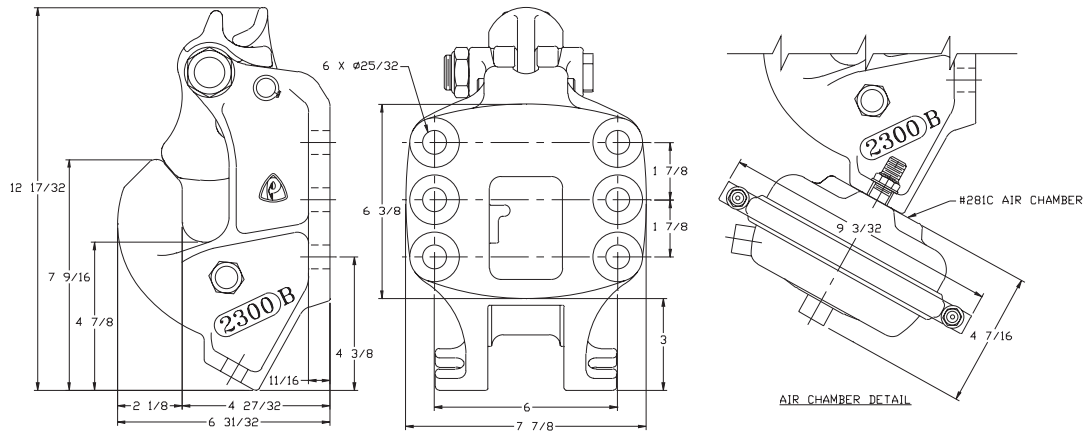
**Optional Accessories:**

- 282 Type-30 Air Chamber (page 69): Provides a larger diaphragm for greater shoe force compared to 281C Air Chamber.
- Thimbles (page 69): 271B (4 3/8 in. / 111 mm), 271C (5 1/2 in. / 140 mm)
- 378 Drawbar Guides (page 68): Helps guide drawbar eye into coupling.

### SPECIFICATIONS

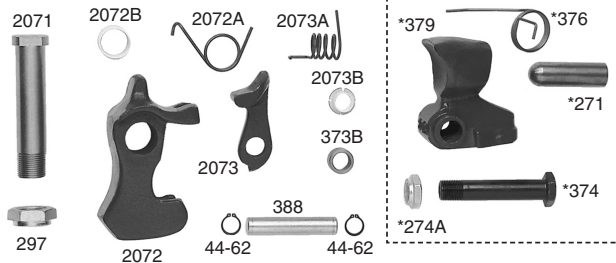
<b>Maximum Gross Trailer Weight:</b>	100,000 lbs.	(45,359 kg)
<b>Maximum Tongue Weight:</b>	20,000 lbs.	(9,071 kg)
<b>Ultimate Latch Capacity:</b>	60,000 lbs.	(27,215 kg)
<b>Maximum Eye X-Section:</b>	1 13/16 in.	(46 mm)
<b>Minimum Eye Opening:</b>	2 3/8 in.	(60 mm)
<b>Unit Weight:</b>	32.5 lbs.	(14.7 kg)

### STANDARD INSTALLATION DRAWING



Pushrod length is 2 3/8 in. (60 mm). Not for use with rear mount air can.

### REPLACEMENT PART INFORMATION



**2000PK Parts Kit Includes:**

- |                      |                  |
|----------------------|------------------|
| 44-62: Snap Ring (2) | 2073: Latch Lock |
| 297: Locknut         | 2073A: Spring    |
| 373B: Spacer         | 2073B: Bushing   |
| 388: Pin             | *271: Thimble    |
| 2071: Bolt           | *374: Bolt       |
| 2072: Latch          | *274A: Locknut   |
| 2072A: Spring        | *376: Spring     |
| 2072B: Bushing       | *379: Shoe       |

\*Not included in parts kit, available individually.

### IMPORTANT GUIDELINES that apply to all Premier Air Adjusted Couplings

- Do not weld on any coupling assembly
- Always use Grade-8 fasteners properly torqued
- Do not apply grease to hook / horn or saddle area
- Air service chamber must be Type-24 or Type-30 with 90-120 PSI air supply
- Clean, inspect and lubricate all coupling components at a minimum of 90 day intervals
- Do not bind-up (Jackknife) any application as stresses can cause damage to products or components, resulting in failure and detachment of the trailer while in use



## Hinge Assemblies

<p>2 21/32 8 3/4 2 5/16 4 9/16 4 5/8 1 13/16 9 13/16 7 1/8 7/8 REF.</p> <p>321B BOLT 321C LOCK NUT 321D FLAT WASHER 329 FLANGE 350 BRACKET 354 HOUSING 344 BUSHING 351 BOLT &amp; NUT (2 PCS) 352 TAPER PIN 321D FLAT WASHER</p>	<h3>320 Hinge Assembly</h3> <p>Accepts 3 in. (76 mm) standard channel or square tubing. 344 Rubber Bushings standard, 344A Poly optional (320A)</p>
--	---

### SPECIFICATIONS

<p><b>Bushing Replacement:</b> 344 (Rubber) or 344A (Poly) <b>Inside Diameter:</b> 1 7/8 in. (48 mm) <b>Outside Diameter:</b> 3 1/2 in. (89 mm) <b>Length:</b> 4 1/2 in. (114 mm)</p>	<p><b>Max. Gross Trailer Weight (pair):</b> 100,000 lbs. (45,359 kg) <b>Unit Weight (pair):</b> 50.2 lbs. (22.8 kg)</p>
---	---

<p>2 21/32 8 1/4 2 7/32 4 9/16 4 5/8 1 13/16 9 13/16 7 1/8 7/8 REF.</p> <p>321B BOLT 321C LOCK NUT 321D FLAT WASHER 329 FLANGE 350 BRACKET 356 HOUSING 344 BUSHING 351 BOLT &amp; NUT (2 PCS) 352 TAPER PIN 321D FLAT WASHER</p>	<h3>330 Hinge Assembly</h3> <p>Accepts 2 1/2 in. (64 mm) round tubing. 344 Rubber Bushings standard, 344A Poly optional (330A)</p>
--	--

### SPECIFICATIONS

<p><b>Bushing Replacement:</b> 344 (Rubber) or 344A (Poly) <b>Inside Diameter:</b> 1 7/8 in. (48 mm) <b>Outside Diameter:</b> 3 1/2 in. (89 mm) <b>Length:</b> 4 1/2 in. (114 mm)</p>	<p><b>Max. Gross Trailer Weight (pair):</b> 100,000 lbs. (45,359 kg) <b>Unit Weight (pair):</b> 50.2 lbs. (22.8 kg)</p>
---	---

<p>12 1/8 7 5/32 5 7/32 4 9/16 7 3/16 1 13/16 10 1/2 8 1/16</p> <p>321B BOLT 321C LOCK NUT 321D FLAT WASHER 431 BRACKET 439 FLANGE 433 HOUSING 434B BUSHING 434A SPACER 10" TO 15" AS REQ'D 351 BOLT &amp; NUT (2 PCS) 432 TAPER PIN</p>	<h3>430 Hinge Assembly</h3> <p>Accepts 2 in. x 4 in. (51 mm x 102 mm) rectangular tubing or channel. 434 Rubber Bushings standard, 434B Poly optional (430A)</p>
--	--

### SPECIFICATIONS

<p><b>Bushing Replacement:</b> 434 (Rubber) or 434B (Poly) <b>Inside Diameter:</b> 2 1/16 in. (52 mm) <b>Outside Diameter:</b> 4 1/4 in. (108 mm) <b>Length:</b> 5 in. (127 mm)</p>	<p><b>Max. Gross Trailer Weight (pair):</b> 150,000 lbs. (68,038 kg) <b>Unit Weight (pair):</b> 86 lbs. (39.0 kg)</p>
---	---

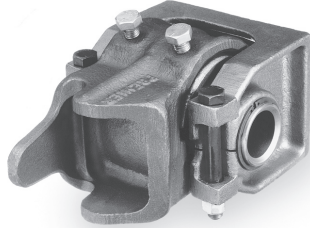
### IMPORTANT GUIDELINES that apply to all Premier Hinge Assemblies

- Never attempt weld repair of damaged or worn hinge components
- Clean and inspect hinge assemblies for damage or excessive wear frequently
- All weld attachments should be performed by a certified welder skilled in structural welding
- The mounting structure the hinges are welded to must be of sufficient strength to withstand load ratings of hinges
- Do not bind-up (Jackknife) any application as stresses can cause damage to products or components, resulting in failure and detachment of the trailer while in use

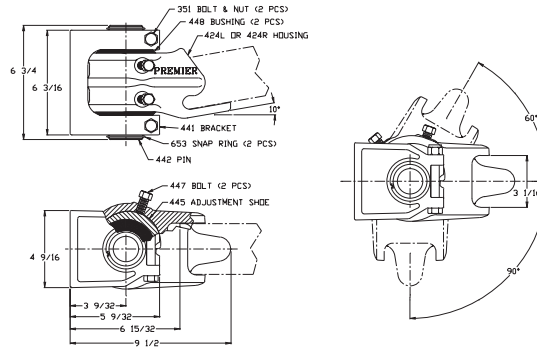


## Hinge Assemblies

### 440 Hinge Assembly




Accepts 3 in. (76 mm) standard channel or square tubing.  
448 Rubber Bushings standard, 448A Poly optional (440A)

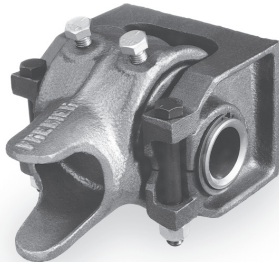


#### SPECIFICATIONS

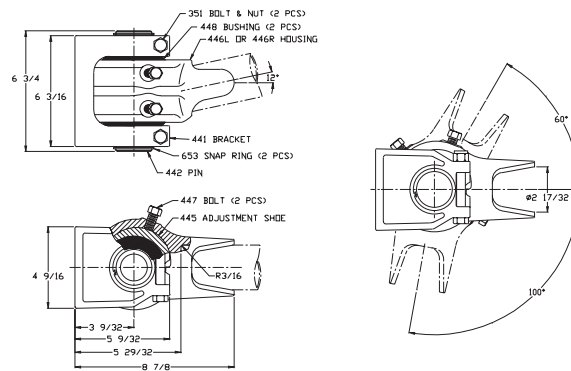
**Max. Gross Trailer Weight (pair):** 100,000 lbs. (45,359 kg)  
**Unit Weight (pair):** 50 lbs. (22.7 kg)

**Bushing Replacement:** 448 (Rubber) or 448A (Poly)   
**Inside Diameter:** 2 in. (51 mm)  
**Outside Diameter:** 3 1/2 in. (89 mm)  
**Length:** 1 3/4 in. (44 mm)

### 450 Hinge Assembly




Accepts 2 1/2 in. (64 mm) round tubing.  
448 Rubber Bushings standard, 448A Poly optional (450A)



#### SPECIFICATIONS

**Max. Gross Trailer Weight (pair):** 100,000 lbs. (45,359 kg)  
**Unit Weight (pair):** 45 lbs. (20.4 kg)

**Bushing Replacement:** 448 (Rubber) or 448A (Poly)   
**Inside Diameter:** 2 in. (51 mm)  
**Outside Diameter:** 3 1/2 in. (89 mm)  
**Length:** 1 3/4 in. (44 mm)

### Hinge Assembly Parts Information

320 Hinge	330 Hinge	430 Hinge	440 Hinge	450 Hinge
<b>321B:</b> Bolt	<b>321B:</b> Bolt	<b>321B:</b> Bolt	<b>445:</b> Adjustable Shoe	<b>445:</b> Adjustable Shoe
<b>321C:</b> Locknut	<b>321C:</b> Locknut	<b>321C:</b> Locknut	<b>447:</b> Bolt (2)	<b>447:</b> Bolt (2)
<b>321D:</b> Flat Washer (2)	<b>321D:</b> Flat Washer (2)	<b>321D:</b> Flat Washer (2)	<b>351:</b> Bolt & Nut (2)	<b>442:</b> Pin
<b>359:</b> Flange	<b>359:</b> Flange	<b>439:</b> Flange	<b>448:</b> Bushing (2)	<b>441:</b> Bracket
<b>350:</b> Bracket	<b>350:</b> Bracket	<b>431:</b> Bracket	<b>424L/424R:</b> Housing	<b>446L/446R:</b> Housing
<b>354:</b> Housing	<b>356:</b> Housing	<b>434A:</b> Spacer	<b>441:</b> Bracket	<b>448:</b> Bushing (2)
<b>344:</b> Bushing	<b>344:</b> Bushing	<b>433:</b> Housing	<b>653:</b> Snap Ring (2)	<b>351:</b> Bolt & Nut (2)
<b>351:</b> Bolt & Nut (2)	<b>351:</b> Bolt & Nut (2)	<b>434:</b> Bushing	<b>442:</b> Pin	<b>653:</b> Snap Ring (2)
<b>352:</b> Taper Pin	<b>352:</b> Taper Pin	<b>351:</b> Bolt & Nut (2)		
		<b>432:</b> Taper Pin		






#### IMPORTANT GUIDELINES that apply to all Premier Hinge Assemblies

- Never attempt weld repair of damaged or worn hinge components
- Clean and inspect hinge assemblies for damage or excessive wear frequently
- All weld attachments should be performed by a certified welder skilled in structural welding
- The mounting structure the hinges are welded to must be of sufficient strength to withstand load ratings of hinges
- Do not bind-up (Jackknife) any application as stresses can cause damage to products or components, resulting in failure and detachment of the trailer while in use



## 600 Jiffy Jack

Premier's 600 Series Jiffy Jacks out perform any other jack in its class. Our unique "Jiffy Quick Release" and other features make this the jack of choice for many fleets around the world.

-  "Jiffy Quick Release" for instant, one-lever lowering and retracting of the leg without cranking.
-  Quick action, spring-activated, folding handle that seats in a positive position for travel. This keeps the handle short, compact, and out of the way.
-  DOM tubing inner and outer tube provide a strong precision fit between tubes, reducing penetration of outside contaminants.
-  Oil cup for convenient lubrication of power screw.
-  Custom mounting options allow mounting plate to be factory welded anywhere on the outside tube, or shipped loose for customer installation (available on most models).

**Capacity:** 5,000 lbs. (2,268 kg) operational, 10,000 lbs. (4,536 kg) static.  
Refer to caster chart for caster limitations, page 65.

**Models Available:**

Model	Travel	Overall Height*	Weight (w/o caster)
600-12	12 in. (305 mm)	26 1/16 in. (662 mm)	41 lbs. (18.6 kg)
600P-12	12 in. (305 mm)	26 1/16 in. (662 mm)	33 lbs. (15.0 kg)
600-15	15 in. (381 mm)	29 5/8 in. (752 mm)	44 lbs. (20.0kg)
600P-15	15 in. (381 mm)	29 5/8 in. (752 mm)	36 lbs. (16.3 kg)

\*(Retracted, Includes handle.)

**Caster Options:** See Caster Chart on page 65.

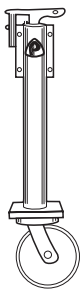
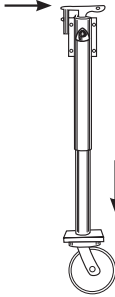
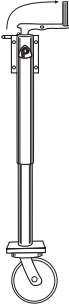
**Optional Accessories:**

**688 Swivel Mount:** Helps lift jack up and out of harms way when traveling (see page 64).

**Shock Absorption Assembly:** Reduces potential for jack damage when sudden drop-type loads are applied.



Model 600-15-726

Jiffy Quick Release			
	<p>The "Jiffy Quick Release" option for our 600 series jacks enables the user to rapidly lower and raise the leg with one quick motion.</p>		<p>While applying slight pressure on the caster plate, turn the Quick Release Lever. Inner jack tube can now be quickly extended to the ground.</p>
	<p>Once the load has been removed from the jack, you can just as quickly return the jack to its fully retracted position.</p>	<p>Once caster is to the ground, only a few cranks of the handle will raise the load to the desired position. Handle will spring back to stored position once released.</p>	

**IMPORTANT GUIDELINES that apply to all Premier Jacks**

- Never operate jack on uneven ground or where there is a chance of the lifted load shifting
- Never place more of a load on jack or caster which is greater than the lowest rated capacity
- Lubricate jack and check jack and caster assembly for damage or worn components frequently
- Do not bind-up (Jackknife) any application as stresses can cause damage to products or components, resulting in failure and detachment of the trailer while in use



## 700 Custom Jack



Model 700P-15-729

The Premier 700 Custom Jack has been engineered and built to the same stringent specifications as our 600 Jiffy Jack. Designed for long life with minimal maintenance, the 700 is easily adapted to nearly any application.

- Quick action, spring-activated, folding handle that seats in a positive position for travel. This keeps the handle short, compact, and out of the way.
- DOM tubing inner and outer tube provide a strong precision fit between tubes, reducing penetration of outside contaminants.
- Tube support collar on outside tube for added strength.
- Oil cup for convenient lubrication of main bearing and power screw.
- Custom mounting options allow mounting plate to be factory welded anywhere on the outside tube, or shipped loose for customer installation.

**Capacity:** 5,000 lbs. (2,268 kg) operational, 10,000 lbs. (4,536 kg) static. Refer to caster chart for caster limitations, page 65.

**Models Available:**

Model	Travel	Overall Height*	Weight (w/o caster)
700-15	15 in. (381 mm)	23 5/16 in. (592 mm)	38 lbs. (17.2 kg)
700P-15	15 in. (381 mm)	23 5/16 in. (592 mm)	30 lbs. (13.6 kg)

\*(Retracted, Includes handle.)

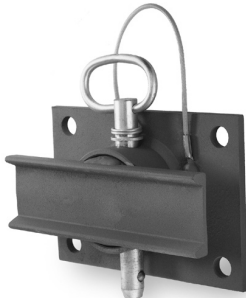
**Caster Options:** See Caster Chart on page 65.

**Optional Accessories:**

**688 Swivel Mount:** Helps lift jack up and out of harms way when traveling (see below).

**Shock Absorption Assembly:** Reduces potential for jack damage when sudden drop-type loads are applied.

### Swivel Mount Options



688 Swivel Mount

**688, 688HD & 688US Swivel Mounts:** Premier's Swivel Mounts help reduce the risk of jack damage by allowing the jack to swing up and out of harms way during vehicle travel.

**688:** May be ordered separately or in place of standard mounting plate on any Premier Jack. (Bolt hole centers: 3 3/8 in. (86 mm) x 5 1/4 in. (133 mm) x 17/32 in. (13 mm) I.D.)

**688HD:** Same general design as our 688 above, but in a heavy-duty version.

**688US:** This is our Universal version of the 688. The 688US easily adapts to existing jacks that already have the standard mounting plate installed.

**IMPORTANT GUIDELINES that apply to all Premier Jacks**

- Never operate jack on uneven ground or where there is a chance of the lifted load shifting
- Never place more of a load on jack or caster which is greater than the lowest rated capacity
- Lubricate jack and check jack and caster assembly for damage or worn components frequently
- Do not bind-up (Jackknife) any application as stresses can cause damage to products or components, resulting in failure and detachment of the trailer while in use





## 800 Utility Jack

Premier's 800 Utility Jack was designed to accommodate light to medium duty applications.

- Quick action, spring-activated, folding handle that seats in a positive position for travel. This keeps the handle short, compact, and out of the way.
- Strong, precision fit square tubing helps reduce penetration of outside contaminants.
- Tube support collar on outside tube for added strength.
- Oil cup for convenient lubrication of power screw.
- Custom mounting options allow mounting plate to be factory welded anywhere on the outside tube, or shipped loose for customer installation.

**Capacity:** 2,500 lbs. (1,134 kg) operational, 5,000 lbs. (2,268 kg) static.  
Refer to caster chart (below) for caster limitations.

**Models Available:**

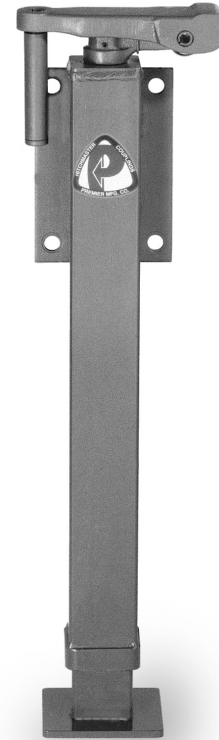
Model	Travel	Overall Height*	Weight (w/o caster)
800P-15	15 in. (381 mm)	23 1/8 in. (587 mm)	19.5 lbs. (8.9 kg)

\*(Retracted, Includes handle.)

**Caster Options:** 620, 623

**Optional Accessories:**

**688 Swivel Mount:** Helps lift jack up and out of harms way when traveling (see page 64).



Model 800P-15-829

### Caster Options

Jack assemblies are to be fully retracted during highway operation. Capacity ratings apply only to manual operation at less than 5 mph (8 kph). Caster assemblies determine actual capacity of jack.

Caster Type	Model	Capacity	Overall Height	Wheel Size	Unit Weight
 Steel	620	1,200 lbs. (544.3 kg)	7 1/4 in. (184 mm)	6 in. (152 mm)	10 lbs. (4.5 kg)
	637	1,200 lbs. (544.3 kg)	7 1/4 in. (184 mm)	6 in. (152 mm)	11 lbs. (5.0 kg)
	745*	1,400 lbs. (636.4 kg)	10 1/8 in. (257 mm)	8 in. (203 mm)	16 lbs. (7.3 kg)
*Not recommended for 600 Series Jiffy Jacks					
 Molden Rubber	623	800 lbs. (362.9 kg)	7 1/4 in. (184 mm)	6 in. (152 mm)	6 lbs. (2.7 kg)
	638	800 lbs. (362.9 kg)	7 1/4 in. (184 mm)	6 in. (152 mm)	7 lbs. (3.2 kg)
	746	800 lbs. (362.9 kg)	10 1/8 in. (257 mm)	8 in. (203 mm)	11 lbs. (5.0 kg)
 Pneumatic	720	390 lbs. (176.9 kg)	13 in. (330 mm)	10 in. (254 mm)	14 lbs. (6.4 kg)
	732*	445 lbs. (201.8 kg)	13 5/8 in. (346 mm)	12 in. (305 mm)	16 lbs. (7.3 kg)
	740*	710 lbs. (322.0 kg)	18 in. (457 mm)	14 in. (356 mm)	30 lbs. (13.6 kg)
*Not recommended for 600 Series Jiffy Jacks					
 Sand Shoe (standard)	729	10,000 lbs. (4,535.9 kg)	-	6 in. (152 mm)	1.5 lbs. (0.7 kg)

**IMPORTANT GUIDELINES that apply to all Premier Jacks**

- Never operate jack on uneven ground or where there is a chance of the lifted load shifting
- Never place more of a load on jack or caster which is greater than the lowest rated capacity
- Lubricate jack and check jack and caster assembly for damage or worn components frequently
- Do not bind-up (Jackknife) any application as stresses can cause damage to products or components, resulting in failure and detachment of the trailer while in use



## Accessories

### Serviceability Gages



Serviceability Gages are used to check the wear of Couplings and Drawbar Eyes. Available as a complete kit or individually, these gages are easy to use and are a must for maintenance managers and safety personnel.

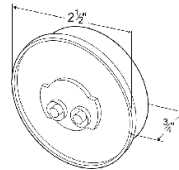
These gages help judge the useful life of couplings and drawbar eyes. Created to highlight wear at the critical percentages of 18% and 20%, they measure the cross-section of coupling pintles (horn) & drawbar eye loops. 18% wear indicates that the product should be replaced as soon as possible. At 20% wear the product is not in usable condition, must be taken out of service immediately and replaced.

Gages can be purchased individually or in two kit options.

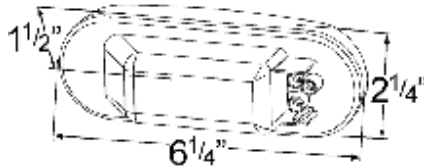
Gage	Description
14000:	<b>Complete Gage Kit</b> (includes all items below)
14020:	2 5/8 in. (67 mm)
14017:	2 1/4 in. (57 mm)
14029:	<b>Fleet Gage Kit</b> (includes items below)
14026:	3/8 in. (10 mm) (Latch Gage)
14014:	2 1/8 in. (54 mm)
14011:	2 in. (51 mm)
14008:	1 3/4 in. (44 mm)
14032:	1 11/16 in. (43 mm)
14005:	1 5/8 in. (41 mm)
14002:	1 1/2 in. (38 mm)



# Electrical



Part Number	Description
DOM73-5055	Lamp, Red, 2 1/2" Incandescent
DOM73-5055L	Lamp, Red, 2 1/2" LED
DOM73-5056	Lamp, Amber, 2 1/2" Incandescent
DOM73-5056L	Lamp, Amber, 2 1/2" LED
DOM73-5056ABS	Lamp, Amber, 2 1/2" Incandescent ABS
DOM73-5057	Lamp, Clear, 2 1/2" Incandescent
DOM73-7807	Grommet, 2 1/2"
DOM73-7808	Grommet, 2 1/2" Enclosed Back



Part Number	Description
DOM73-5055	Lamp, Red, 2 1/2" Incandescent
DOM73-5055L	Lamp, Red, 2 1/2" LED
DOM73-5056	Lamp, Amber, 2 1/2" Incandescent
DOM73-5056L	Lamp, Amber, 2 1/2" LED
DOM73-5056ABS	Lamp, Amber, 2 1/2" Incandescent ABS
DOM73-7826	Grommet, Oval
DOM73-7827	Grommet, Oval Enclosed Back



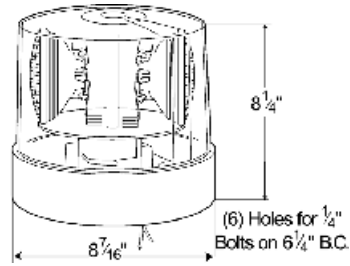
Part Number	Description
DOM71-3536	ID Lamp, Red, 3 In - A - Row



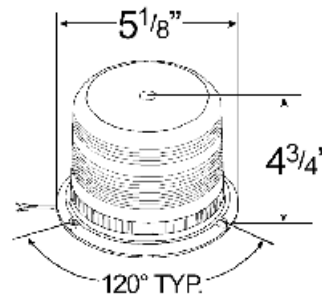
Part Number	Description
DOM73-5069	Lamp, Red, 4", Stop/Turn/Tail
DOM73-5069L	Lamp, Red - LED, 4", Stop/Turn/Tail
DOM73-5069R	Lamp, Red-Reflector, 4", Stop/Turn/Tail
DOM73-5070	Lamp, Clear, 4", Back-Up
DOM73-7822	Grommet, 4"



Part Number	Description
DOM73-5214	Lamp, Red-Rect, 4", Stop/Turn/Tail
DOM73-5214L	Lamp, Red-Rect - LED, 4", Stop/Turn/Tail
DOM73-5215	Lamp, Amber-Rect, Stop/Turn/Tail
DOM73-5215L	Lamp, Amber-Rect - LED Stop/Turn/Tail
DOM73-5216	Lamp, Rect, Clear, Back-Up
DOM73-7862	Grommet, Rect



Part Number	Description
GRO76333	Rotating Beacon, Amber



Part Number	Description
GRO77083	Strobe Beacon, Amber

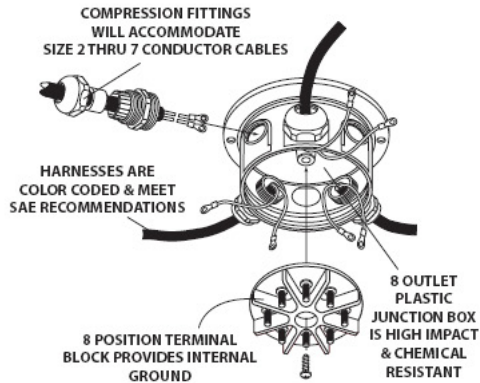


External power pack not required  
 Metalized reflector version offers more intense focused light  
 Non-metalized version offers wider viewing angle  
 Dual or quad flashing patterns  
 Meets recommended SAE J1318 & J845 photometric specifications  
 Synchronized alternating feature  
 Lamp life rated at 100,000 hours  
 Resistance to shock & vibration  
 Fit'N Forget adapter plug provides corrosion & moisture resistance  
 Integral flange option features built-in lens  
 Fits standard 4" Sealed Tail-Light Hole/Grommet

Part Number	Description
DOM44212Y	Amber Strobe, 4"

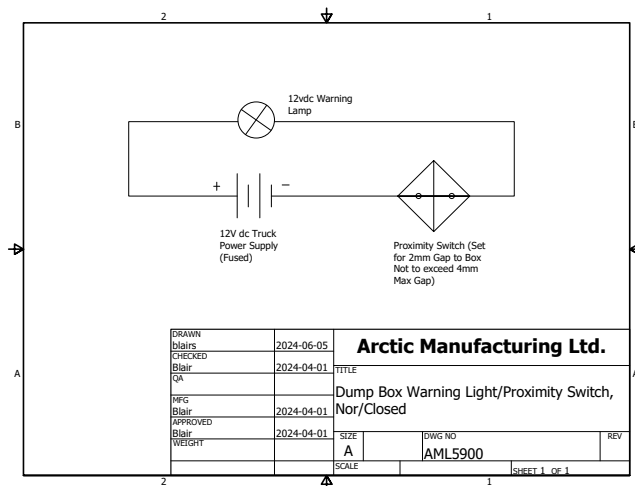


Part Number	Description
DOM72-5039	Work Lamp Incandescent 12v: Rubber
DOM72-5039LR	Work Lamp LED 12v: Rubber Housing
DOM72-5039LA	Work Lamp LED 12v: Alum Housing



Part Number	Description
DOM50400	Truck-Lite Junction Box
DOM50830	Thread-In Plug
DOM50840	Compression Fitting: 3/8" ID
DOM50841	Compression Fitting: 1/2" ID
DOM50842	Compression Fitting: 3/8" ID
DOM50846	Compression Fitting: 2/3 Flat Wire Oval

### Dump Box Warning System Complies with new BC Commercial Transport Regulations



Part Number	Description
AML5900	Proximity Sensor & Magnet Kit





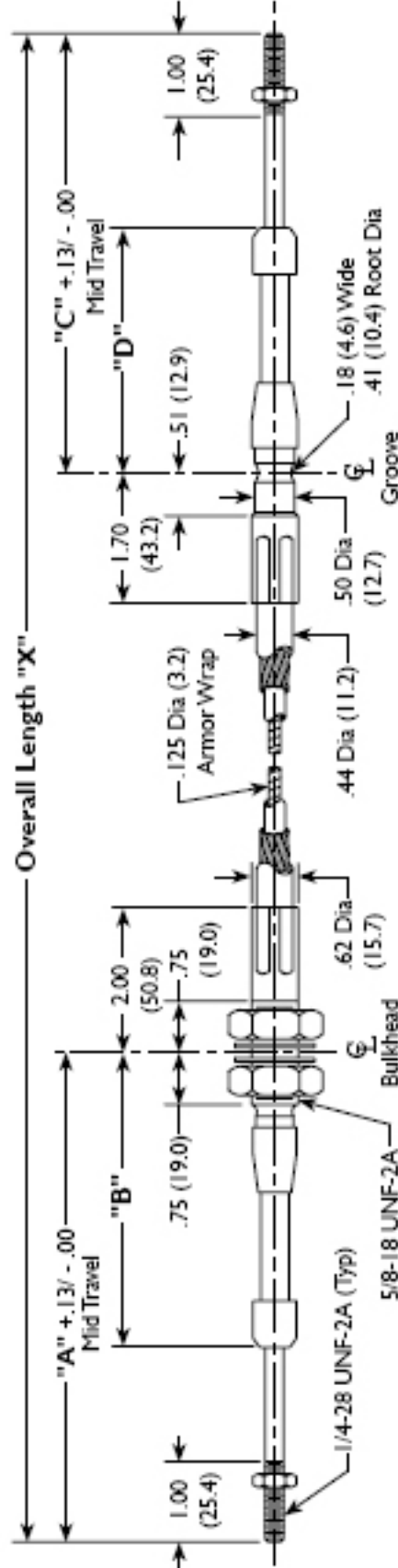
Typical applications include drum controls, throttle controls (cement mixers), shifting hydrostatic transmissions or activating hydraulic valves. 8" minimum bend radius.

See page 9 for Part Number Codes.

Travel	Bulkhead Type Fitting		Grooved Type Fitting		Input Load Pounds (kg)
	"A"	"B"	"C"	"D"	
1"	4.62 (117.3)	3.19 (81.0)	4.00 (101.6)	2.56 (65.0)	120 (54.4)
2"	6.13 (155.7)	4.19 (106.4)	5.50 (139.7)	3.56 (90.4)	90 (40.8)
3"	7.62 (193.5)	5.19 (131.8)	7.00 (177.8)	4.56 (115.8)	75 (34.0)
4"	9.13 (231.9)	6.19 (157.2)	8.50 (215.9)	5.56 (141.2)	65 (29.5)
5"	10.62 (269.7)	7.19 (182.6)	10.00 (254.0)	6.56 (166.6)	60 (27.2)
6"	12.13 (308.1)	8.19 (208.0)	11.50 (292.1)	7.56 (192.0)	60 (27.2)

All Dimensions are Inches (mm)

Control Length (Inches)	"X"
Up to 60.00	± .31
60.01 to 120.00	± .50
120.01 to 240.00	± .75
Above 240.00	± 1.00



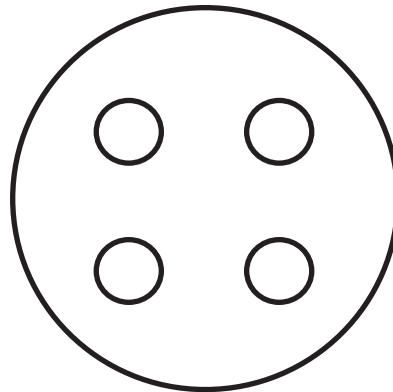
Part Number	Description
MIS10-04323-072CAB	Push-Pull Cable - 72"
MIS10-04323-084CAB	Push-Pull Calbe - 84"



## Standard Pup Control Wiring

Tarp  
Red

Diverter Valve  
Green



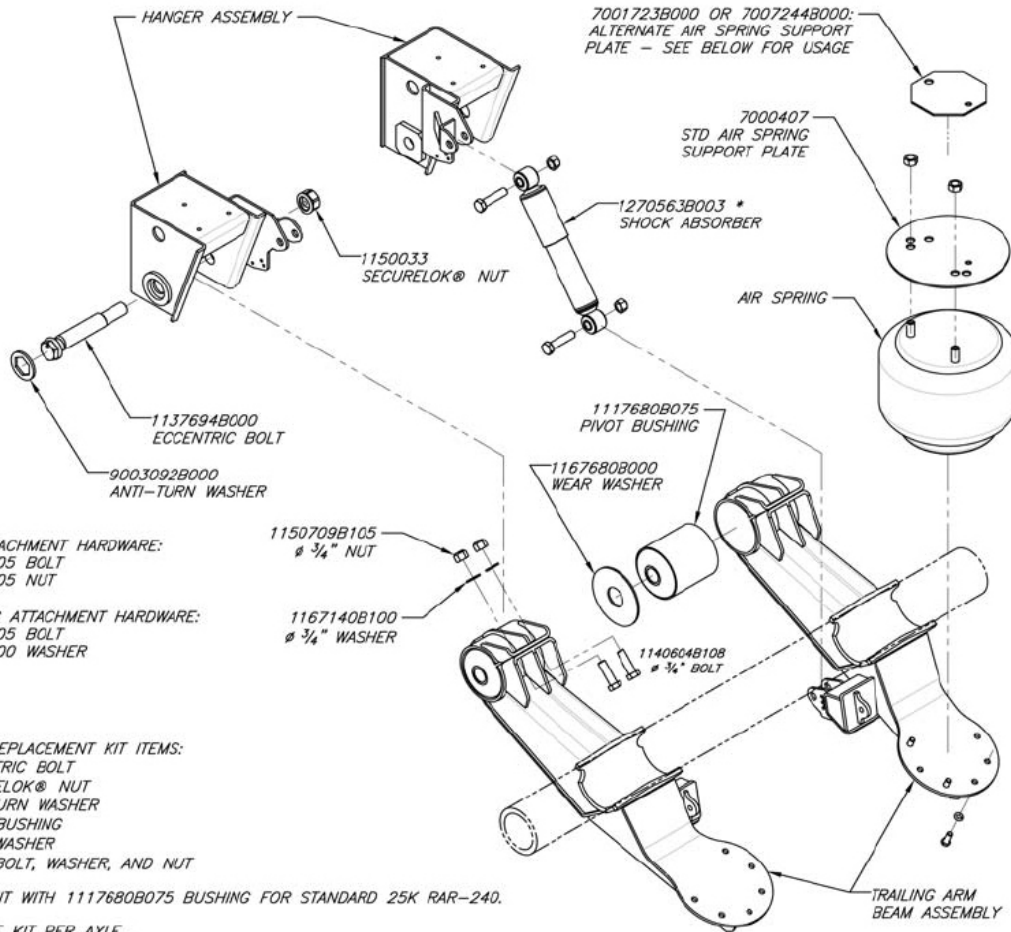
Brown  
Tail-Gate Trip

Ground  
White



Figure 6 - Manufactured After 10-1-95

RAR-240 UNDERSLUNG SUSPENSION  
25,000 LB CAPACITY

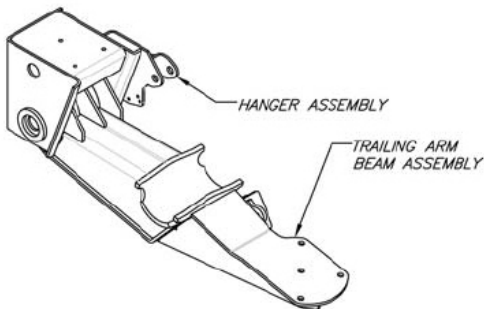


\* USE 1253069B000 FOR 2400014.  
USE 1260005 FOR 2407744D507.  
NO SHOCK FOR 2400054 AND 2400064.

ALTERNATE AIR SPRING SUPPORT PLATE USAGE:  
USE 7001723B000 FOR 2404106, 2404107, 2404108 & 2407744D507.  
USE 7007244B000 FOR 2407744D113.

FOR PART NUMBERS NOT SPECIFIED  
PLEASE SEE APPLICABLE ENGINEERING DRAWING  
OR CONTACT RIDEWELL FOR ASSISTANCE.

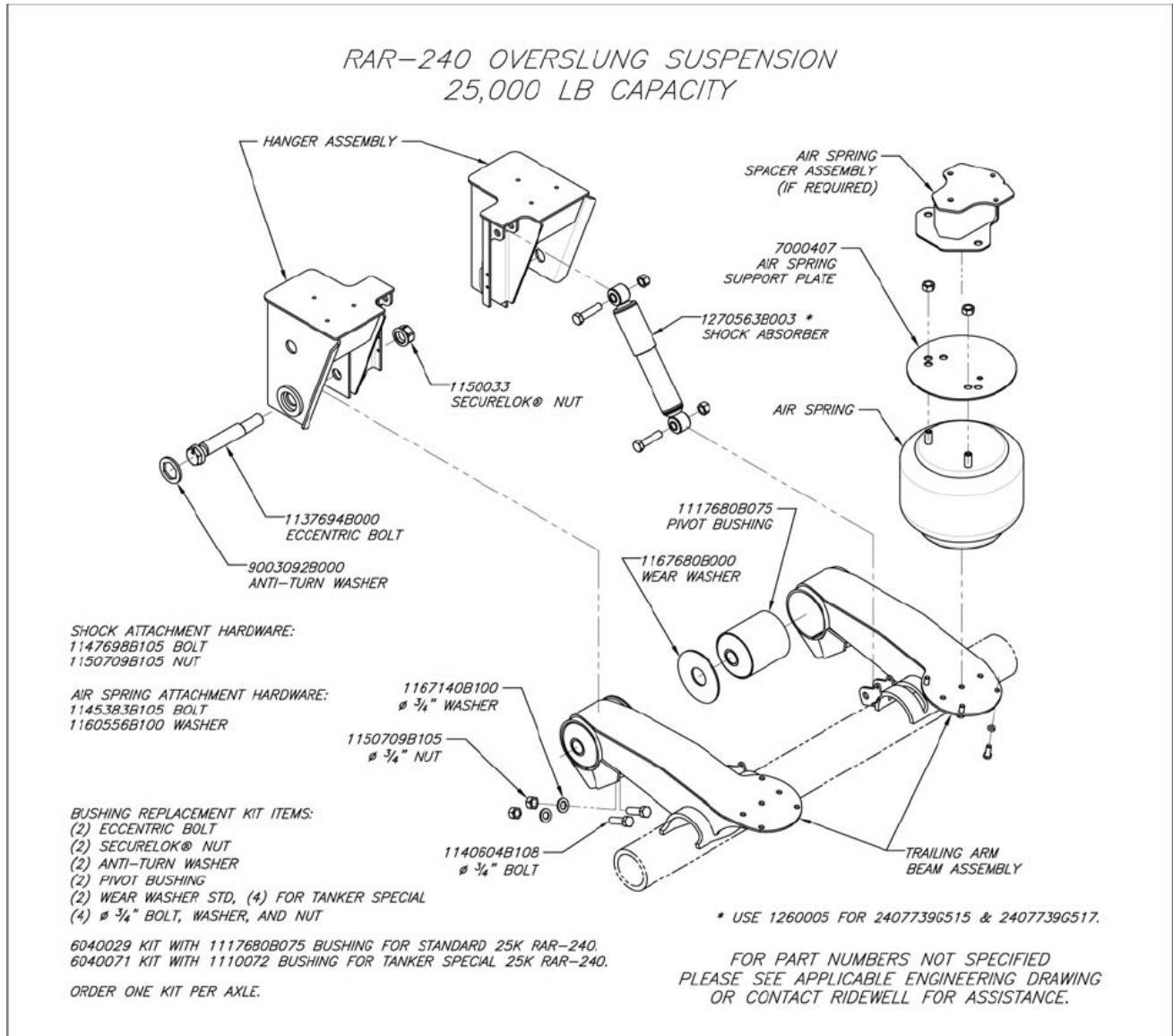
RAR-240 UNDERSLUNG SUSPENSION  
30,000 LB CAPACITY



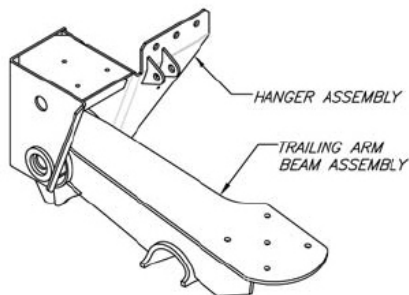
ASSEMBLY SAME AS 25K EXCEPT DIFFERENT STYLE HANGER & BEAM.  
BUSHING REPLACEMENT KIT:  
6040028 KIT WITH 1117680B001 BUSHING FOR STD 30K RAR-240.



Figure 7 - Manufactured After 10-1-95

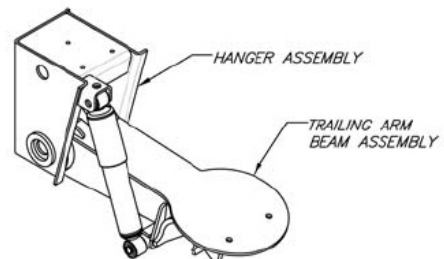


*RAR-240 OVERSLUNG SUSPENSION  
30,000 LB CAPACITY*



ASSEMBLY SAME AS 25K EXCEPT DIFFERENT STYLE HANGER & BEAM.  
BUSHING REPLACEMENT KIT:  
6040028 KIT WITH 1117680B001 BUSHING FOR STD 30K RAR-240.

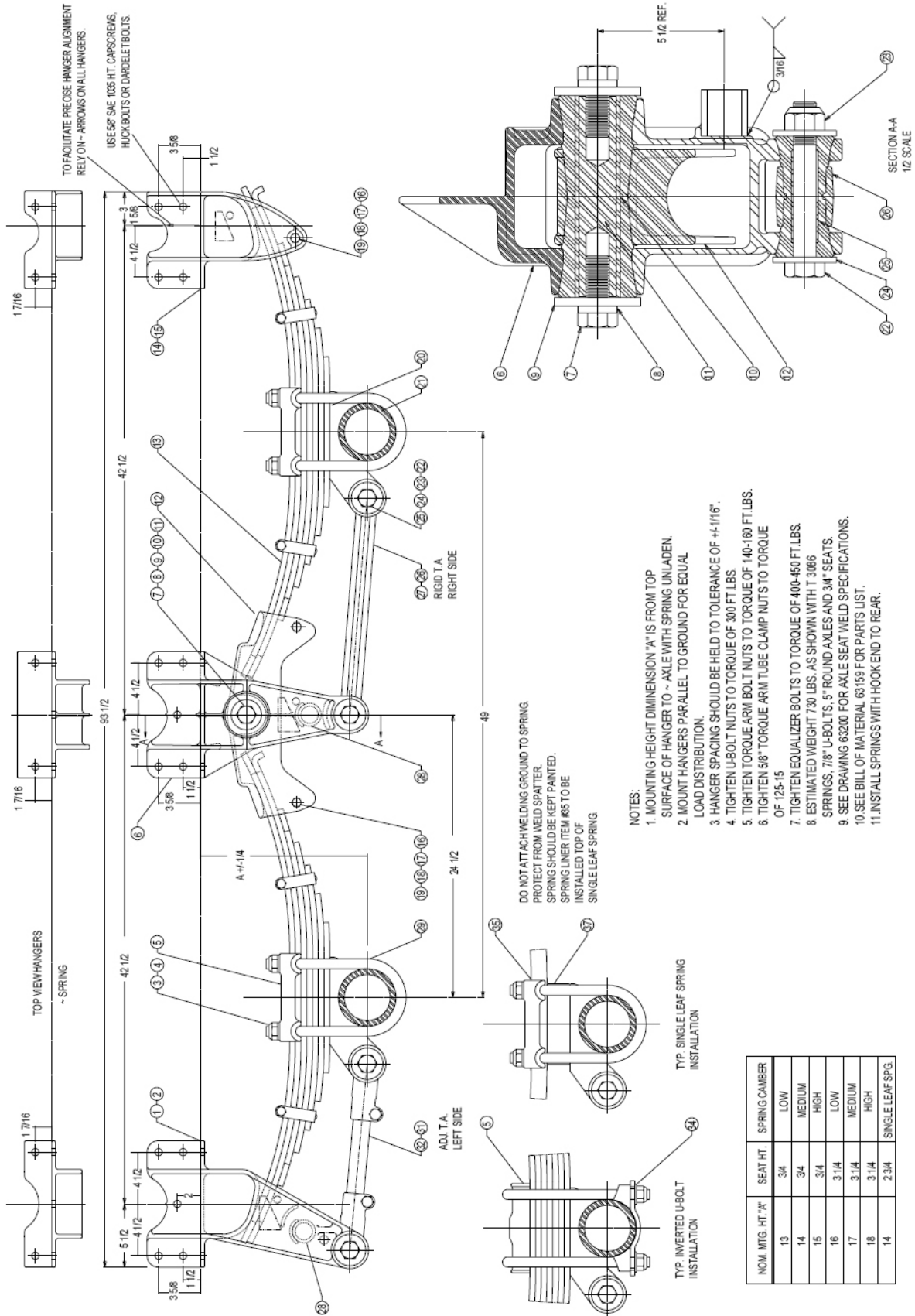
*RAR-240 LKS SUSPENSION  
25,000 LB CAPACITY*



ASSEMBLY SAME AS 25K EXCEPT DIFFERENT STYLE HANGER & BEAM  
AND NOTE SHOCK ABSORBER ON OUTBOARD SIDE OF SUSPENSION.  
BUSHING REPLACEMENT KIT:  
6040029 KIT WITH 1117680B075 BUSHING FOR STANDARD 25K LKS.  
6040071 KIT WITH 1110072 BUSHING FOR TANKER SPECIAL 25K LKS.

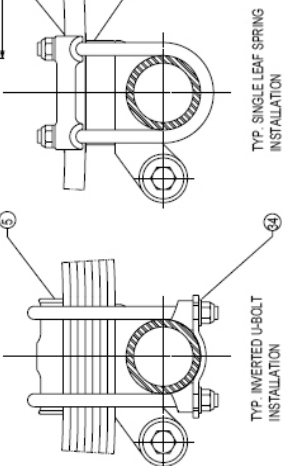


### Reyco - Granning 21B Mechanical Suspension



- NOTES:**
1. MOUNTING HEIGHT DIMENSION "A" IS FROM TOP SURFACE OF HANGER TO - AXLE WITH SPRING UNLOADED.
  2. MOUNT HANGERS PARALLEL TO GROUND FOR EQUAL LOAD DISTRIBUTION.
  3. HANGER SPACING SHOULD BE HELD TO TOLERANCE OF +4-1/16".
  4. TIGHTEN U-BOLT NUTS TO TORQUE OF 300 FT.LBS.
  5. TIGHTEN TORQUE ARM BOLT NUTS TO TORQUE OF 140-160 FT.LBS.
  6. TIGHTEN 5/8" TORQUE ARM TUBE CLAMP NUTS TO TORQUE OF 125-15
  7. TIGHTEN EQUALIZER BOLTS TO TORQUE OF 400-450 FT.LBS.
  8. ESTIMATED WEIGHT 730 LBS. AS SHOWN WITH T 3086 SPRINGS, 7/8" U-BOLTS, 5" ROUND AXLES AND 3/4" SEATS.
  9. SEE DRAWING 63200 FOR AXLE SEAT WELD SPECIFICATIONS.
  10. SEE BILL OF MATERIAL 63159 FOR PARTS LIST.
  11. INSTALL SPRINGS WITH HOOK END TO REAR.

DO NOT ATTACH WELDING GROUND TO SPRING  
PROTECT FROM WELD SPATTER  
SPRING SHOULD BE KEPT PAINTED.  
SPRING LINER ITEM #65 TO BE  
INSTALLED TOP OF  
SINGLE LEAF SPRING



NOM. MTS. HT. "A"	SEAT HT.	SPRING CAMBER
13	3/4	LOW
14	3/4	MEDIUM
15	3/4	HIGH
16	3/4	LOW
17	3/4	MEDIUM
18	3/4	HIGH
14	2 3/4	SINGLE LEAF SPG.



### Reyco - Granning 21B Mechanical Suspension

ITEM	PART NUMBER	Single Axle	Tandem Axle	Tri-Axle	DESCRIPTION
1	T5424	1	1	1	Front Hanger, Right
2	T5425	1	1	1	Front Hanger, Left
3	1434501	8	16	24	Lock Nut 7/8"
4	T7292	8	16	24	Washer 7/8"
5	Variable*	2	4	6	Top U-bolt Plate
6	T5426	0	2	4	Center Hanger
7	1424801	0	4	8	Equalizer Bolt 1"
8	1425001	0	4	8	Lockwasher 1"
9	1424901	0	4	8	Equalizer Compression Washer
10	T5524	0	4	8	Equalizer Bearing
11	1424701	0	2	4	Equalizer Shaft
12	T5427	0	2	4	Equalizer
13	Variable*	2	4	6	Spring
14	T5428	1	1	1	Rear Hanger, Right
15	T5429	1	1	1	Rear Hanger, Left
16	T5544	2	6	10	Cap Screw 1/2" x 4 3/4"
17	T1704	2	6	10	Hex Nut 1/2"
18	T1705	2	6	10	Lockwasher 1/2"
19	T2106	2	6	10	Spring Roller
20	Variable*	2	4	6	Axle Seat
21	Not Furnished				Axle
22	T5492	4	8	12	Torque Arm Bolt
23	T5495	4	8	12	Lock Nut 1"
24	T2224	8	16	24	Torque Arm Washer
25	T5493	8	16	24	Torque Arm Bushing
26	T7635	1	1	1	Torque Arm Rigid, Front 16 1/4" Curb Side
27	T2293	0	1	2	Torque Arm Rigid, Rear 18 7/8" Curb Side
28	Not Furnished				Pipe Brace
29	Variable*	4	8	12	U-Bolt
30	T5485	1	1	1	Torque Arm Adjustable, Front 16 1/4" Road Side
31	T5486	0	1	2	Torque Arm Adjustable, Rear 18 7/8" Road Side

SPRING SELECTION TABLE				
PART NO.	# LEAF	ARCH	CAPACITY	LENGTH
0837601	3	Med.	11,000	42
1260901	7	Med.	9,000	42 1/2
1563601	1	Med.	12,500	42
1890601	9	Med.	9,000	55
2001601	Comp.(1)	Med.	11,000	41 3/4
2151101	3	Med.	12,500	42
T3086	7	Med.	9,000	42 1/4
T3564	8	Med.	11,000	42 1/4
T5547	7	High	9,000	42 1/2
T5555	1	Med.	11,000	42 7/10
T5592	8	Low	11,000	42 1/2
T5597	8	High	11,000	42 1/2
T7297	1	Med.	11,000	36 1/2
T7321	1	High	11,000	42.18
T7452	9	Med.	13,000	41 3/4
18308-01	10	Med.	14,250	41 3/4